

Free Tourist Travel Pack and Where to Stay



**Download free to your
Phone, Tablet or Laptop
tassietourist.info**

Tasmania

the holiday state of mind

A great place to visit, a wonderful place to live



Download Tourist Information
To Your Phone or Tablet - tassietourist.info



Handy Stuff to Know

Fruit or Vegetables **CANNOT** be taken into Tasmania.
Strict Quarantine regulations apply.

Quarantine Information 1300 368 550
Call within Tasmania 03 6169 9021

Bio Security Tasmania www.nre.tas.gov.au
Email: Biosecurity.Tasmania@nre.tas.gov.au

No Passenger Train Services – Only Bus Services
Dusk and Dawn Wildlife on the Move – Be Alert
Vehicles drive on the left hand side of the road in Australia.
National Park Pass required to enter all National Parks
www.parks.tas.gov.au

Spirit of Tasmania

Departure point
136 Corio Quay Road North Geelong Victoria 1800 634 906
www.spiritoftasmania.com.au

Flights to Tasmania

Jetstar	www.jetstar.com
King Island Airlines	www.kingislandair.com.au
Qantas	www.qantas.com
Virgin	www.virginaustralia.com



Information Centres



Backpacker Accommodation



Caravan / Holiday Parks



S.C. Vehicles Stays



Farm Stays

Tasmania

Town by Town



Tasmania once known as Van Diemen's Land
Circumnavigated 1798 by George Bass & Matthew Flinders.

Arthurs Lake

Blue Lake Lodge on Arthurs
329 Arthurs Lake Road Arthurs Lake

03 6259 8030

Arthur River

Remote Arthur River is the perfect base for exploring the takayna/Tarkine wilderness. Australia's largest tract of cool-temperate rainforest. The quiet west coast village swells in holiday periods attracting campers bushwalkers and anglers. Cruise the Arthur River or hit the coast on a guided beach or bushwalk. This is a wild landscape head to the Edge of the World where the Arthur River meets the Southern Ocean to feel the elements at full force.

Arthur River Cabin Park
1239 Arthur River Road Arthur River



03 6457 1212

Sunset Holiday Villas
23 Gardiner Street Arthur River
www.sunsetholidayvillas.com

03 6457 1341

Austins Ferry

Hestercombe Chapel, Australia's oldest Congregational Church sits in the middle of a paddock off the Midland Highway. Built in 1833 by a wealthy Hobart merchant Henry Hopkins who holidayed in the area.

Avoca

Near here the Bushranger Dunn tied up an old couple who kept an Inn and then he attempted to set fire to the premises. The victims were rescued by John Batman (of founding Melbourne fame). The St Thomas Anglican Church a local landmark built of freestone in the Romanesque Revival Style completed in 1842.

Bagdad

The town was named by the explorer Hugh Germain, a private in the Royal Marines. He was said to carry two books in his saddlebags while travelling, the Bible and the Arabian Nights which he used as inspiration when he named places.

Battery Point

A most delightful part of Hobart, perched between city docks and Sandy Bay dates back to the early days when it was a maritime village. Named after a battery of guns which were established on this point in 1818. Arthur Circus cottages were constructed for the officers of the garrison.

Battery Point continued

Blue Hills Motel 03 6223 1777
96 Sandy Bay Road Battery Point
www.bluehillsmotel.top

Grand Old Duke 0413 040 403
31 Hampden Road Battery Point
www.grandoldduke.com.au

Grand Vue Private Hotel 03 6223 3388
8 Mona Street Battery Point
www.grandvuehotel.com.au

Lenna of Hobart 03 6232 3900
20 Runnymede Street Battery Point
www.lenna.com.au

Prince of Wales Hotel 03 6223 6355
55 Hampden Road Battery Point
www.princeofwaleshotel.net.au

Salamanca Inn 03 6223 3300
10 Gladstone Street Battery Point
www.salamancainn.com.au

Salamanca Wharf Hotel 03 6224 7007
17a Castray Esplanade Battery Point
www.salamancawharfhotel.com.au

Shipwrights Arms Hotel 03 6223 1846
29 Trumpeter Street Battery Point
www.shipwrightsarms.com.au

Watermans Hotel 0492 418 832
27 Salamanca Place Battery Point
www.watermanshotel.com.au

Beauty Point

This seaside holiday town on the kanamaluka /River Tamar was originally established as Tasmania's first deep water port to service the mines at Beaconsfield. A working seahorse farm provides guaranteed sightings of seahorse and sea dragons as well as platypuses and echidnas. Stroll along the water's edge with a hot brew from a local cafe or head to the wildlife haven of nearby Narawntapu National Park. Situated on Port Dalrymple (the mouth of Tamar River) a deep water port was constructed to service the Beaconsfield Gold Mine, The town is also the home of the Australian Maritime College.



Beauty Point continued
Beauty Point Tourist Park
36 West Arm Road Beauty Point
www.beautypointtouristpark.com.au



03 6383 4536

Beaconsfield

The Beaconsfield Mine collapse occurred on April 25th 2006, of the seventeen people in the mine at the time fourteen escaped immediately following the collapse, one was killed and the remaining two were found alive and rescued. Beaconsfield originally known as Brandy Creek was founded in the 1850's. Limestone mining led to the discovery of gold. The Dalley brothers discovered Gold here in 1877. At the peak of the gold rush 700 men were employed and 26 tonne of gold was recovered valued at about 3 million pounds. It became Tasmania's richest settlement when gold fever took hold in 1887. Learn more about the disaster as well as the town's mining history at the Beaconsfield Mine and Heritage Centre. There's also a brewery in town where you can try a local beer.

Beaconsfield Recreation Ground
Grubb Street Beaconsfield



03 6383 6350

The Exchange Hotel
141 Weld Street Beaconsfield
www.exchangebeaconsfield.au

03 6383 1410

Beaumaris / Scamander

Scamander a small town at the mouth of the Scamander River between St. Helens and St. Marys on the north-east coast. The town is a popular holiday destination because of its wide, sandy beaches and views of the ocean. Recreational activities include surfing, swimming and fishing for bream in the river. Toilets are located at Wrinklers Lagoon and Scamander river mouth.

Walking Trail

Dianas Basin = 1 hour return, easy

Start: Diana's Basin car park (turn east off Tasman Highway just over the bridge at Crockers Arm Creek). Easy walk North along the beach to unusual rocky point (exposed Mathinna beds).

Walking Trail

Winifred Curtis Reserve = several easy walks on flat walking tracks 🐾

Start: Car park is on Tasman Highway opposite Upper Scamander Road. Enjoy 7 kilometres of easy walking tracks through an 80 hectare private nature reserve with over 150 species of native trees, shrubs and plants, plus fungi, birds, marsupials and countless invertebrates. The Reserve is administered by a not-for-profit trust and maintained entirely by volunteers. Entry is free but donations are always appreciated.



Beumaris

The Surfside Beumaris
269 Tasman Highway Beumaris
www.thesurfside.com.au

0455 889 167

Beauty Point

Beauty Point Waterfront Hotel
116 Flinders Street Beauty Point
www.beautypointhotel.com.au

03 6710 5000

Tamar Cove Motel and Restaurant
4421 West Tamar Highway Beauty Point
www.tamarcove.com

03 6383 4375

Berriedale

Mona Pavilions
655 Main Road Berriedale
www.mona.net.au

03 6277 9978

Bicheno



A fishing port and holiday destination, originally a Sealing and Whaling town from about 1803. It later became a coal mining port 1854. Today Crayfish, Abalone and Scallops are the main industries.

Beachfront Bicheno Hotel
232 Tasman Highway Bicheno
www.beachfrontbicheno.com.au

03 6375 1111

Bicheno by the Bay
Waubs Esplanade Bicheno
www.bichenobythebay.com.au

03 6375 1171

Bicheno Caravan Park
52 Burgess Street Bicheno
www.bichenocaravanpark.com



0408 050 336

Bicheno East Coast Holiday Park
4 Champ St Bicheno
www.caravanparkstasmania.com



03 6375 1999

Diamond Island Resort
Restaurant - Bar and Penguin Show
69 Tasman Highway Bicheno
www.diamondislandresort.com.au

03 6375 1610

Vehicles drive on the left in Australia



Bicheno continued

The Pondering Frog
1694 Tasman Highway Applawn
www.ponderingfrog.com.au



0422 860 064

Winter Sun Gardens Motel
35 Gordon Street Bicheno
www.wintersunbicheno.com.au

03 6375 1225

Binalong Bay / Bay of Fires

The Bay of Fires is situated between Eddystone Point and Binalong Bay. Captain Tobias Furneaux named the area in 1773 after sighting Aboriginal fires on shore. The area is of great cultural significance to the Aboriginal community of Tasmania. Today its values and beauty can be experienced and appreciated by locals and visitors alike. Public toilets are located near the tennis courts and beside the first car park. Campsites have basic toilets.

Binalong Bay / Bay of Fires

Bay of Fires Beaches

Easy beach walks with rocky outcrops

There are a number of beaches in the Bay of Fires, mostly accessible from the southern end (Binalong Bay) and by the road from Binalong Bay to the Gardens. From the Gardens, the beaches are only accessible by foot. The length, time and place of walking is your choice. Some beaches allow dogs on lead. Seasonal restrictions apply.

Walking Trail

Humbug Point Reserve = 6-7 hours return, moderate

There is a walk right around Humbug Point Reserve, starting from either Skeleton Bay car park or Moulting Bay (via Grants Point and Dora Point). This walk can be broken up into a number of short walks starting from different points along the track, as detailed below. Dogs are permitted on lead between Skeleton Bay and Dora Point only.

Walking Trail

Skeleton Bay to Dora Point

Start: Skeleton Bay car park.

Skeleton Point - easy 40 minute return. This track follows the side of Skeleton Bay to Skeleton Rock. If the tide is low, take one of the numerous side tracks down to the rocky coastline and explore the tidal pools for marine life. Look up into the old blue gums, sea eagles can sometimes be seen perched up high or flying overhead. When Skeleton Point is reached you are at the southern end of the Bay of Fires and on a clear day Eddystone Point lighthouse (the Northern end of the Bay of Fires) can be seen. Australasian Gannets can sometimes be seen diving for fish and keep an eye out for migrating whales.

Farm Gate Produce – So Fresh



Binalong Bay / Bay of Fires

Walking Trail

Grants Point - medium 70 minutes return.

Continue past the track down to Skeleton Point and follow the main track through Sheoak woodland to Grants Point. Take the time to stop and enjoy the natural beauty of this area. Once you reach Grants Point look out for the huge granite boulder and marvel at how it remains perched in position. Seals are often seen swimming or sunbaking on the rocks offshore.

Walking Trail

Dora Point - medium 3 hours return.

Continue past Grants Point and follow the coast around. On this section of track two beaches can be accessed and on a calm day it is worth carrying your mask and snorkel. Great views across to the St Helens bar way and St Helens Point are available from this part of the track. Once Dora Point beach is reached the walk has ended. Look out for the directional sign off the beach to the car park. This beach is an ideal swimming spot if it is too windy at Binalong Bay.

The above walks can be accessed by gravel roads, so it is possible to walk back along the roads to create a loop walk or have a car shuttle system to save back tracking.

Binalong Bay / Bay of Fires

Walking Trail

Moulting Bay to Dora Point Camping Area via Humbug Point

– medium, 2.5 hours Return Start: Moulting Bay Day Use Car Park

This walk commences at the day use car park at Moulting Bay and is a medium 2.5 hour round trip. The track from Moulting Bay to Humbug Point follows onto beaches and deviates slightly inland over some of the rocky points and is best walked at low tide. Bird life is prolific, watch out for cormorants and oyster catchers. During autumn, hundreds of swans make the bay home. The occasional sea eagle can also be seen. Stroll through the eucalypt woodland and copses of grass trees with their tall seed spikes which are remnant reminders of prehistoric vegetation. During spring and summer this area showcases a diverse range of Tasmania's native flowering plants, including orchids. Especially look out for the large and small duck orchids late December. Before reaching the Dora Point campground, you will see a sign posted track to your left. Either take this track to return across the peninsula to Moulting Bay, or continue along the track to Dora Point.

Bay of Fires Bush Retreat
795 Relds Road Binalong Bay

www.bayoffiresbushretreat.com.au



03 6376 6000

Boat Harbour

The beach is at the centre of Boat Harbour's appeal with its white sands and clear water. The beach has family friendly waves and plenty of rock pools to explore. Grab a cold drink at the surf club or a meal at a nearby cafe.

Mount Biking - Derby



Boat Harbour continued

Boat Harbour Beach Holiday Park
21 Moore Street Boat Harbour

www.boatharbourbeachhp.com.au



0417 448 323

Bothwell

The gateway to Tasmania's Central Highlands. Bothwell was settled in the 1820's mainly by Scottish farmers. It has more than 50 heritage listed buildings many made of local sandstone and classified by the National Trust. Wander the wide main street to admire the old churches and stone cottages. Bothwell is also home of Australia's oldest golf course built in the 1850's named Ratho. Still in use today.

Bothwell Campground & Caravan Park



03 6259 5503

Ratho Farm Accommodation
2122 Highland Lakes Road Bothwell

www.rathofarm.com



03 6259 5553

Branxholm

Imperial Hotel
5 Stoke Street Branxholm

www.imperialhotelbranxholm.com.au



03 6354 6121

Breadalbane

The Woolpack Inn built in 1839 was a staging post on the Launceston – Hobart route from the 1850's to the late 20th century. It was damaged by fire in 1972.

Bream Creek

Derford Farm Campsite
243 Bream Creek Road Bream Creek



03 6253 5294

Bridgewater

Established in 1812, the causeway is 1.3km's long was built in the early 1830's by 200 convicts who wheel barrowed 2 million tonnes of stone and clay from a nearby quarry. The bridge was opened in 1849.

Bridport

Just 3 km north east of Bridport is Barnbougale Dunes Golf Course ranked in the top 50 golf courses in the world. Bridport was a favourite hiding place for pirates and runaway convicts. The popular holiday destination of Bridport surrounded by white sand beaches and native bushland reserves. Stroll the 11km Bridport Walking Track a circuit through wildflower reserves native grasslands forest landscape and tidal estuaries. Nearby is the world's largest privately owned lavender farm.

[Bridport – World Renowned Barnbougale Golf Course](#)



Bridport continued

Barnbogle Lost Farm Golf Resort
425 Waterhouse Road Bridport
www.barnbogle.com.au

03 6310 8400

Bridport Bay Inn
105 Main Street Bridport
www.bridportbayinn.top

03 6356 1238

Bridport Hotel
79 Main Street Bridport
www.bridporthotel.com.au

03 6356 1114

Bridport Seaside Caravan Park
2/30 Bentley Street Bridport
www.bridportcaravanpark.com.au



03 6356 1227

Brighton

From 1826 onwards, the township was the site of the Brighton Barracks, a military accommodation facility until sold off for subdivision in the early 2000's.

Brighton Hotel Motel
141 Brighton Road Brighton
www.brightonmotelhotel.com.au

03 6268 0355

Bruny Island

Abel Tasman saw the island in 1642 but did not land. Other visitors include James Cook in 1777 and William Bligh (1788 and 1792). Dramatic landscapes are matched by great produce on Bruny Island. The island is accessed via ferry from Kettering, 30 minutes south of Hobart. Don't miss the views from Truganini Lookout on the Neck the narrow isthmus between North and South Bruny. Visit Cape Bruny historic Lighthouse the second oldest in Australia then join an eco-cruise to see the towering sea cliffs of South Bruny National Park and spot marine wildlife. Take a boat trip out into the Great Southern Ocean from Adventure Bay its spectacular.

Bruny Island

Bruny Island Landscape Supplies
1751 Main Road Adventure Bay



0456 298 225

Captain Cook Holiday Park
786 Adventure Bay Road
Adventure Bay Bruny Island
www.captaincookpark.com



03 6293 1128

Camp Fire Out – No Risk



Bruny Island continued

Hotel Bruny
3959 Main Road Alonnah
www.hotelbruny.com.au



03 6293 1148

Buckland

A stained glass window depicting the life of John the Baptist and dating back to the 14th century is in the church.

Twamley Farm
431 Twamley Road Buckland
www.twamleyfarm.com.au



0439 114 996

Ye Olde Buckland Inn
39 Kent Street Buckland



03 6257 5114

Burnie

Founded in 1827 originally named Emu Bay then later renamed Burnie after William Burnie a director of the Van Diemen's Land Company in the early 1840's. The Burnie Inn is the town's oldest building. Built in the 1840's now in Burnie Park. A two storey lace decorated police station at 88 Wilson Street began life as a dentist's house and surgery during Burnie's first economic boom around 1908. Burnie is a deep water port which serves the west coast. The city overlooks Bass Strait and for many years rode on the fortunes of rich mineral deposits found on the west coast. Visit the little Penguin Observation Centre on the foreshore refuel at the town's restaurants cafes or farm gates and visit the local whisky distillery for cellar door tastings. Natural beauty is on show at the Emu Valley Rhododendron Garden.

Beach Hotel Burnie
1 Wilson Street Burnie
www.beachhotelburnie.com.au

03 6431 2333

Beachfront Voyager Motor Inn
9 North Terrace Burnie
www.beachfrontvoyager.com.au

03 6431 4866

Burnie by the Bay
51 North Terrace Burnie
www.burniebythebay.com.au

0419 533 933

Burnie Central Townhouse Hotel
139 Wilson Street Burnie
www.townhousehotelburnie.com.au

03 6431 4455

Burnie Holiday Caravan Park & Motel
253 Bass Highway Burnie
www.burniebeachaccommodation.com.au



03 6431 1925

Burnie continued

Ikon Hotel 03 6432 4566
First and Second Floors 22 Mount Street Burnie
www.ikonhotel.com.au

Menai Hotel 03 6431 9364
20 Edwardes Street South Burnie
www.themenaihotel.weebly.com

Top of the Town Motel and Apartments 03 6431 4444
195 Mount Street Upper Burnie
www.totthm.com.au

West Beach Holiday Villas 03 6431 5708
43 North Terrace Burnie
www.westbeachholidayvillas.com.au

Cambridge

Barilla Holiday Park  1800 465 453
75 Richmond Road Cambridge
www.barilla.com.au

Big4 Hobart Airport Tourist Park  1800 441 184
2 Flight Street Cambridge
www.big4.com.au

Cornwall Cottage B&B  0408 373 242
368 Richmond Road Cambridge
www.cornwall.com.au

Riversdale Estate Cottages 03 6248 5555
222 Denholms Road Cambridge
www.riversdaleestate.com.au

Travelodge Hotel Hobart Airport 03 6248 3555
1 Holyman Avenue Cambridge
www.travelodge.com.au

Campania

Campania developed around a railway station built in 1876.



Dusk and Dawn Wildlife on the Move – Be Alert

Campbell Town

State selling centre for stud sheep, links to the Wool Industry go back to the early 1820's when Saxon Merinos were introduced. Campbell Town Agricultural Show is the oldest continuously run show in Australia dating back to 1838 and is originally one of four Garrison Towns linking Hobart and Launceston named after Governor Macquarie wife in 1821. Campbell Town Inn opened for business as "The Beehive" in 1840. The first land grant at Carrick was in 1818 and a decade later a Wooden Mill was built on the river bank. The Anglican Church St. Andrews has held services since the 1840's Wander historic buildings and follow the stories of prominent convicts on the self-guided Convict Brick Trail. The town's aptly named Red Bridge was constructed by convicts in the 1830's fashioned from 1.5 million red-clay bricks made on site.

Blackburn Park

On main road via Franklin Street Campbell Town



03 6397 7303

Campbell Town Hotel

118 High Street Campbell Town

www.campbelltownhotel.com

03 6381 1158

Castle Forbes Bay

Took its name from a ship called Castle Forbes which landed sick women emigrants here.

Chudleigh

Chudleigh Showgrounds

Corner Burnett & Sorell Streets Chudleigh



03 6393 5300

Claremont

Claremont Hotel

1 Main Road Claremont

www.theclaremonthotel.com.au

03 6225 9965

Claude Road

Silver Ridge Retreat

46 Rysavy Road Claude Road

www.sridge.com.au



03 6491 1727

Cleveland

St. Andrew's Inn built in 1845 to serve the increasingly heavy traffic between Hobart and Launceston, this inn was a well-known haunt of bushrangers seeking potential victims.

Cockle Creek

Cockle creek a two hour drive south of Hobart is the southernmost point to which you can drive in Australia. It sits on Recherche Bay, at the edge of the Tasmanian Wilderness World Heritage Area. The area has a rich Aboriginal history and was once the site of four whaling stations. Today the calm waters make it ideal for swimming fishing snorkelling and kayaking. It's also the departure point for walks into Southwest National Park.

Coles Bay

Beautiful unspoilt bay with clear water and lovely beaches.

Big4 Iluka on Freycinet Holiday Park
15 Reserve Road Coles Bay
www.big4.com.au



03 6257 0115

Edge of the Bay Resort
2308 Coles Bay Road Coles Bay
www.edgeofthebay.com.au

03 6257 0102

Freycinet Golf Club
1 Swanwick Road Coles Bay
Email: freycinetgc@gmail.com
www.freycinetgolfclub.com



refer website

Freycinet Lodge
Freycinet National Park Coles Bay
www.freycinetlodge.com.au

1300 061 335

Freycinet Resort
1799 – 1819 Coles Bay Road Coles Bay
www.freycinet.com

03 6287 6345

Saffire Freycinet
2352 Coles Bay Road Coles Bay
www.saffirefreycinet.com.au

03 6256 7888

Conara
Vaucluse Estate Tasmania
643 Glen Esk Road Conara
www.vauclusetasmania.com.au

0437 144 158

Corinna

The Pieman River so named because Pearce the Cannibal Bushranger was tracked to the river. He had been a seller of pies in Hobart. Corinna is in a remote but special part of the island located in pristine rainforest on the Pieman River. Once a west coast mining town it is now an eco-resort. Walking is a big part of any visit from the accessible Huon Pine Walk to the more challenging Whyte River and Mount Donaldson hikes. Cruise the river aboard an historic Huon Pine riverboat or enjoy the water's glassy reflections from a kayak.

Corinna Wilderness Village
1 Corinna Road Corinna
www.corinna.com.au

03 6446 1170

[Salamanca Market Hobart – Every Saturday](#)



Cradle Mountain Lake St. Clair National Park "World Heritage Area"

One of the principal tourist sites in Tasmania owing to its natural beauty. So named as it resembles the cradle miners used to wash gold from gravel. Get a taste for alpine wilderness at Cradle Mountain one of Tasmania's most visited natural attractions located in the northern part of Cradle Mountain-Lake St Clair National Park. Bushwalking is the star of the show the Dove Lake circuit is an excellent two hour introduction or trek to Marion's Lookout or the Cradle Mountain summit for incredible views. Head deep into the alpine landscape on the six day Overland Track and keep an eye out for wombats as you wander the population here is thriving.

Cradle Mountain Highlanders Cottages **03 6492 1116**
3876 Cradle Mountain Road Cradle Mountain
www.cradlehighlander.com.au

Cradle Mountain Hotel **1300 061 827**
Cradle Mountain Road Cradle Mountain
www.cradlemountainhotel.com.au

Cradle Mountain Wilderness Village **03 6492 1500**
3816 Cradle Mountain Road Cradle Mountain
www.cradle.cradlevillage.com.au

Cradle Mountain
Discovery Parks - Cradle Mountain   **03 6492 1395**
3832 Cradle Mountain Road Cradle Mountain
www.discoveryholidayparks.com.au

Peppers Cradle Mountain Lodge **1300 092 876**
4038 Cradle Mountain Road Cradle Mountain
www.peppers.com.au

Cradoc
Huon Valley Backpackers   **03 6295 1551**
Balfes Hill 4 Sandhill Road Cradoc
www.huonvalleybackpackers.com

Crayfish Creek
Crayfish Creek Van & Cabin Park  **03 6443 4228**
20049 Bass Highway Crayfish Creek
www.crayfishcreekecoaccommodation.com.au

Cressy

The rural town of Cressy perched below the Great Western Tiers lures anglers with its proximity to world class trout fishing. Nearby Brumbys Creek and the Macquarie Lake and Liffey Rivers are great spots to sink a line. Cressy's colonial history dates to the 1850's when it serviced the surrounding wheat farms. While in town get snapped next to the 6m high Big Trout on Main St.

Cygnet

The bay in which Cygnet sits was named Port des Cygnet (Port of Swans) in 1793. The first European Settlers established a shipbuilding business in 1834. Arty Cygnet is wedged between the Huon River and the D'Entrecasteaux Channel south of Hobart. Known for its produce Cygnet is surrounded by apple berry and cherry orchards as well as several vineyards. Also known for its thriving arts scene its main street is lined with galleries craft shops and cafes. Twice a month there's a local market and each January the town hosts the Cygnet Folk Festival.

Cygnet Caravan Park
78 Mary Street Cygnet



0418 532 160

Cygnet Hotel & Guest House
77 Mary Street Cygnet

03 6295 1267

Eden Farmstay "The Barn"
22 Supplice Road Cygnet
www.edenfarmstay.com.au



0498 739 458

Derby

Dorset Hotel
29 Main Street Derby
www.dorsethotel.com.au



03 6354 2360

Deddington

Deddington has important links with the well-known English landscape painter John Glover who settled here in 1830 on land he named Deddington and Pattersdale after villages in the English Lakes district. Deddington Chapel (1842) was designed by John Glover who is buried in the nearby cemetery.

Close By - 14km south on the property Kingston, is a 3 roomed convict built cottage, lock-up and storeroom (1825). John Batman lived in the cottage before setting off for Port Phillip. John Batman and John Glover were friends and neighbours and with a small group became the first white men to reach the summit of Ben Lomond in 1833.

Deloraine

The area was explored in 1821 by Captain Roland who was searching for farmland it is now a major agricultural district. The Bonney Inn built in 1831. Bowerbank Mill (1835) designed by Tasmania's first native born architect, William Archer. The mill was originally water driven but converted to steam in 1871. Calstock an old homestead and property on Lake Highway once bred Australia's finest racehorses today is a B & B today. The creative centre of Deloraine has been classified by the National Trust for its collection of historic buildings. It's perfect for window shopping the streets are lined with well-preserved Victorian and Georgian shopfronts toting art crafts and antiques. Wander the Great Western Tiers Sculpture Trail and the short kooparoona niara cultural trail inspired by palawa (Tasmanian Aboriginal) culture. Deloraine has a living craft community which culminates in a four day craft fair each November.



Deloraine continued

Blakes Manor Self Contained Accommodation 0492 472 767
18 West Goderich Street Deloraine
www.blakesmanor.com.au

Bowerbank Mill Cottages 0428 622 628
4455 Meander Valley Road Deloraine
www.bowerbankmill.com.au

Deloraine Apex Caravan Park 03 6362 1071
50 West Parade Deloraine
www.deloraineapexcaravanpark.com.au



Deloraine Hotel 03 6362 2022
Emu Bay Road Deloraine
www.delorainehotel.com.au



Empire Hotel 03 6362 1029
19 Emu Bay Road Deloraine
www.empirehoteldeloraine.com.au

Mountain View Country Inn 03 6362 2633
144 Emu Bay Road Deloraine
www.mountainviewcountryinn.com.au

Tier View Twin Cottages 03 6362 2377
125 Emu Bay Road Deloraine

Derby

A former Tin mining town on the Tasman Highway, now in rural production. Surveyed in 1855 but was not settled until 1874. The creative centre of Derby has been classified by the National Trust for its collection of historic buildings. It's perfect for window shopping the streets are lined with well-preserved Victorian and Georgian shop fronts toting art craft and antiques

Dorset Hotel 03 6354 2360
29 Main Street Derby
www.dorsethotel.com.au

Derwent Bridge

Around two and a half hours from both Launceston and Hobart Derwent Bridge is named for its crossing near the headwaters of the River Derwent. Situated at the southern end of Cradle Mountain-Lake St Clair National Park. Derwent Bridge offers the perfect start to a wilderness adventure. Take a ferry ride on Australia's deepest freshwater lake where the scenery is punctuated by rugged mountain peaks.



Derwent Bridge continued

Derwent Bridge Chalets and Studios
15478 Lyell Highway Derwent Bridge
www.derwent-bridge.com

03 6289 1000

Derwent Bridge Wilderness Hotel
15573 Lyell Highway Derwent Bridge
www.derwentbridgewildernesshotel.com.au



03 6289 1144

Devonport



Terminal for the vehicle ferry Spirit of Tasmania and agricultural export town. Situated on the Mersey River back in the 1850's there were twin settlements at the mouth of the Mersey called Formby and Torquay. The Don River Tramway began in 1854 to bring timber out of the Don Valley, the original tramway was replaced by a rail line in 1916. The new line brought limestone from quarries worked by BHP. Closed in 1963 and re-opened in 1971 by Van Diemen Light Railway Society. It is now Tasmania's only full size passenger railway. Devonport an hour west of Launceston is a vibrant city bordered by mountains rolling fields and Bass Strait and the first port of call for visitors arriving on the Spirit of Tasmania ferry from Geelong in Victoria. Devonport's maritime roots run deep: the Bass Strait Maritime Centre is the place to delve deeper. Stretch the legs with a walk to candy-striped Mersey Bluff Lighthouse and look for rock carvings at this important palawa (Tasmanian Aboriginal) site. Journey through bushland to the beach aboard the vintage rail cars at Don River Railway or head to Kelcey Tiers for cross country mountain bike trails.

Abel Tasman Caravan Park
6 Wright Street East Devonport
www.abeltasmancaravanpark.com.au

03 6427 8794

Alexander Hotel
78 Formby Road Devonport
www.alex.goodstone.com.au



03 6424 2252

Argosy Motor Inn
221 Tarleton Street East Devonport
www.goodstone.com.au

03 6427 8872

Barclay Motor Inn
112 North Fenton Street Devonport
www.barclaymotorinn.com.au

03 6424 4722

Bayview Holiday Village
2/12 North Caroline Street East Devonport
www.bay-view-holiday-village.tasmanianhotels.com

03 6427 0499

No Passenger Rail – Only Tourist Rail and Bus Services



Devonport continued

Discovery Parks – East Devonport
13-19 Tarleton Street East Devonport
www.discoveryholidayparks.com.au



03 6427 8418

Edgewater Hotel
4 Thomas Street East Devonport
www.edgewaterhotel.com.au

03 6427 8441

Formby Hotel
82 Formby Road Devonport
www.formbyhotel.goodstone.com.au

03 6424 1601

Gateway Hotel by Nightcap Plus
16 Fenton Street Devonport
www.gatewayinn.com.au

03 6424 4922

Mersey Bluff Caravan Park
41 Bluff Road Devonport
www.merseybluffcaravanpark.com.au



03 6424 8655

Molly Malones Irish Pub
34 Best Street Devonport
www.mollymalones.com.au



03 6328 3367

Novatel Devonport
2 Best Street Devonport
www.all.accor.com

03 6420 5500

Sunrise Devonport
140 North Fenton Street Devonport
www.sunrisedevonport.com.au

03 6424 8411

Tasman Backpackers
114 Tasman Street Devonport
www.tasmanbackpackers.com.au



03 6423 2335

The Cove Tasmania
256c Waverley Road Devonport
www.thecovetasmania.com

03 6459 0480

The Elimatta Hotel
15 Victoria Parade Devonport
www.elimattahotel.goodstone.com.au

03 6424 6555

Speed and Fatigue Kills



Doo Town

This quirky seaside community emerged in the mid 1930's when Hobart architect named his holiday shack Doo I. The trend took off with the likes of Doo-Me and Doo-Us and today most of the town's dwellings have "Doo" names. House names all have the words "Doo" - Like this Will Doo - Doo Drop In – She Will Doo. explore nearby rock formations in Tasman National Park including the Devil's Kitchen Tasman Arch and the Blowhole.

Douglas River

Douglas River Cabins
19029 Tasman Highway Douglas River
www.douglasrivercabins.com.au



03 6375 1164

Dover

This fishing port was once a convict station, the Commandants Office still stands next to the caravan park. The far south town of Dover was established as a convict station in the mid-1840s. Walk along the foreshore for great views of three evocatively named islands Faith Hope and Charity. In town taste locally made spirit distilled with sassafras a tree native to the cool temperate rainforests of Tasmania. Nearby head underground at Hastings Caves State Reserve and bathe in thermal springs.

Ashdowns of Dover B&B
6957 Huon Highway Dover
www.ashdownsofdover.com.au



0417 746 437

Dover Beachside Tourist Park
27 Kent Beach Road Dover
www.dovertouristpark.com.au



0427 888 911

Dunalley

Small fishing village home of the Denison Canal originally hand dug started in 1901 and completed in 1905, spanned by a Swing Bridge. In January 2013 Dunalley was badly affected by bushfires losing approximately 65 structures. Dunalley is a sleepy fishing village on the drive to Port Arthur and the Turrakana/Tasman Peninsula. Despite being badly affected by the 2012 bushfires the town is once again thriving. Visit the local winery for wine and food with a view on one of Tasmania's most historically rich properties head to the wharf for fresh fish and chips or to the town's hotel for traditional pub fare.

Dunalley Hotel
210 Arthur Highway Dunalley



03 6128 1045



Slow Down you are on Holidays - Enjoy

Eaglehawk Neck

In convict days this narrow isthmus at its narrowest point of less than 100 metres wide was guarded by a line of ferocious tethered dogs, soldiers and constables stood guard to stop convicts escaping from Port Arthur. Martin Cash the bushranger swam this bay supposedly shark infested after escaping from Port Arthur. When he was caught he was sentenced to death but was reprieved and given a life sentence. He later became the caretaker at Hobart Botanical Gardens. Teralina/Eaglehawk Neck connects the Turrakana/Tasman Peninsula to the Forestier Peninsula. Today a sculpture marks the location of the barricade. Head beachside to see the perfect patterns of the Tessellated Pavement a section of flat rock carved by the sea.

Lufra Hotel & Apartments

380 Pirates Bay Drive Eaglehawk Neck

www.lufrahotel.com

03 6250 3262

Elizabeth Town

Christmas Hills Raspberry Farm & Cafe

9 Christmas Hills Road Elizabeth Town

www.raspberryfarmcafe.com



03 6362 2186

Ellendale

Sassafras Springs

263 Dillons Road Ellendale

www.sassafrassprings.com.au



0409 282 814

Eugenana (Devonport)

Lakeside Tourist Caravan Park

76 Lakeside Road Eugenana



03 6427 2343

Evandale

Originally founded as Collins Hill by Governor Macquarie in 1811. Named in 1829 as Evansdale and renamed Evandale in 1836 after the surveyor and Painter George Evans. John Batman the founder of Melbourne and landscape Painter John Glover lived close by. The National Penny Farthing Championships are held here annually in February. Ned Kelly's father John a prisoner worked in the town. The picturesque northern midlands town of Evandale is one of the best preserved historic settlements in Australia. National Trust classified the Georgian village is home to notable heritage buildings as well as drawcard events like the Glover Prize for Tasmanian art each March. A visit to the Sunday market selling antiques and collectables as well as local produce is a great day out.

Evandale



Falls Park - Evandale

Logan Road Not available Sat. & Sun.



03 6391 8128

Support the Local Tourist Operators



Evandale continued

Prince of Wales Hotel
2 Nile Road Evandale

03 6391 8381

Exeter



Once a shipyard town now a centre for fruit growing. A small community just 20 minutes north of Launceston. Exeter is at the centre of a thriving agricultural area specialising in dairy beef cattle apple orchards sheep and fruit. Exeter is also at the heart of the Tamar Valley where you'll find more than 30 cool climate vineyards. Follow in the footsteps of notorious bushranger Mathew Brady on a visit to nearby Brady's Lookout.

Fingal

First surveyed in 1824 and became a convict station in 1827. It is the headquarters for the state's Coal Industry and the first payable gold in Tasmania was found here in 1852.

Forth

Ballachulish Farm Stay
460 Braddons Lookout Road Forth
www.ballachulishfarmstay.com.au



0408 450 608

Forthside

Compass Hut
195 Bellamy Road Forthside
www.compasshut.com.au



0437 994 552

Four Mile Creek - Iron House Point

White Sands Resort
21554 Tasman Highway Four Mile Creek
www.white-sands.com.au

03 6372 2228

Franklin

The oldest village in the Huon Valley named after Sir John Franklin a Lieutenant Governor of Tasmania who was also known for his polar exploration and his discovery of the North West Passage. A small township on the banks of the Huon River. Franklin charms with its village vibes. Franklin has a proud shipbuilding tradition and is home to the Tasmanian Wooden Boat Centre a boat-building school dedicated to preserving the traditional craft of wooden boat building. Explore the riverbank on the short Franklin Landcare boardwalk or take a cruise on the broad Huon River.

Whispering Spirit Holiday Cottages

253 Swamp Road Franklin
www.whisperingspirit.com.au

03 6266 3341

Freycinet Peninsula

Founded in 1916 Freycinet is Tasmania's oldest national park.



Geeveston



The centre of Tasmania's apple and fruit growing industry. The tiny town of Geeveston is an hour southwest of Hobart and the gateway to wilderness explorations in Harz Mountains National Park. Walk among the treetops on the Tahune Airwalk an elevated walkway with a cantilevered platform 50m above the Huon River. Amazing restaurants, fabulous dog park and kids playground.

CMCA RV Park Geeveston
49 Arve Road Geeveston



02 4978 8788

Ex Serviceman & Women's Club
11 Memorial Drive Geeveston

03 6297 1105

Tahune Cabins Self Contained Accommodation
Arve Road Geeveston

03 6251 3903

www.tahuneadventures.com.au

George Town



Situated at the mouth of the Tamar River is George Town, this sleepy seaside town is Australia's third oldest European settlement behind Sydney and Hobart settled in 1804. It has a strong history best explored at The Watch House and strong maritime history which can be understood better with guided tours available at the Bass and Flinders Maritime Museum and Low Head Pilot Station Museum. Low Head is situated 6km's away from George Town and has an amazing walking trail named the kanamaluka Trail, showing the stunning views of the Tamar Valley. At the very tip of Low Head, the Bass Strait can be seen from the Low Head Lighthouse, the third lighthouse to be constructed in Australia, and it is also Australia's oldest continuously used pilot station. This light is now unmanned and automated. Just before arriving to the Lighthouse, Fairy Penguins come ashore as the sun goes down and guided tours are available every evening at the Low Head Penguin Tours. George Town is home to amazing MTB Trails with 70km of riding over two trails networks, George Town Mountain Bike Trails complete the North-East Tasmanian Mountain Biking narrative. One of these trails starts at Mount George, at the top of Mount George you can access the lookout with minimal fitness required and see beautiful views of the Tamar and surroundings.

George Town is home to beautiful beaches one including East Beach (Low Head) which is an all-abilities recreation area that includes accessible seating, sensor activated shower, accessible toilets and parking, accessible BBQ tables and BBQ's which ensures that all people of all ages and all abilities are able to enjoy a day out at the beach. George Town also offers amazing family friendly parks like Regent Square: The purpose-built playground includes multiple apparatus such as a flying fox and trampolines, complemented by a skate park, half basketball court, rotunda, BBQ facilities and a wind shelter gathering space surrounded by established trees. Regent Square was also the first park in Tasmania to get an accessible communication board, this communication board is the first of its kind in Tasmania playgrounds, setting a precedent for accessible communication and inclusion. The communication board features Auslan signs and picture visuals, allowing individuals to gesture, point, or scan symbols for effective communication. It's designed for people of all abilities, promoting inclusivity and bridging communication gaps.

George Town continued

Georgetown Motor Inn 03 6382 1042
100 Agnes Street George Town

Grays George Town Hotel 03 6382 2655
75 Macquarie Street George Town

The Pier Hotel 03 6382 1300
5 Elizabeth Street George Town
www.pierhotel.com.au



York Cove Hotel and Restaurant 03 6351 5763
2 Ferry Boulevard George Town
www.yorkcove.com.au

Glenfern

Base Camp Tasmania 03 6261 4519
959 Glenfern Road Glenfern
www.basecamptas.com.au



Glengarry

Langdale Farm 0404 095 590
Glengarry Road Glengarry
www.langdalefarm.com



Glenorchy

Hobart Showground Motorhome Park 03 6272 6812
2 Howard Road Glenorchy
www.hobartshowground.com.au



Golden Valley

Quamby Corner Caravan Park 03 6369 5156
15 Golden Valley Road Golden Valley
www.quambycorner.com



Gowrie Park

Gowrie Park Wilderness Village 03 6491 1385
1447 Claude Road Gowrie Park
www.gowriepark.com.au



Granton

Situated at the southern end of the causeway, the old watch house on the main road had Australia's smallest cell (50cm square and 2 metres high) it was built by convicts in 1838.

Take a moment, take a breath and relax.

Tasmania the holiday state of mind



Greens Beach

Greens Beach Caravan and Holiday Park
1774 Greens Beach Road Greens Beach
www.greensbeachcaravanpark.com.au



0427 264 144

Gretna

28 Gates Luxury Farm Stay & Fishery
662 Marked Tree Road Gretna
www.28gatesfarmstay.com.au



0428 371 701

Truffle Lodge

3411 Lyell Highway Gretna
www.trufflelodge.com



0417 996 305

Grindelwald

Tasmanian Roelf Vos sold his supermarket chain to Woolworths and built a Swiss village around an artificial lake and opened in 1989.

Tamar Valley Resort Grindelwald

7 Waldhorn Drive Grindelwald
www.tamarvalleyresort.com.au

03 6330 0400

Gunns Plains

Wings Wildlife Park Camping and Units
137 Winduss Road Gunns Plains
www.wingswildlifepark.com.au



03 6429 1151

Hadspen

Mary Reiby the woman on the Australian \$20 note. A successful business woman well ahead of her time, arrived in Sydney in 1792 as a fourteen year old convict girl and rose to prominence as a banker in Sydney and made her home at Entally House Tasmania. Her son Thomas became Premier of Tasmania (1866 - 67)

Discovery Parks Hadspen

Corner Main Street & Meander Valley Highway
Hadspen
www.discoveryholidayparks.com.au



1800 281 885

Red Feather Inn (1845)

42 Main Street Hadspen
www.redfeatherinn.com.au

03 6393 6506

Hagley

Hagley RV Farm Stay
62 Meander Valley Road Hagley



0409 974 531



Hagley continued

Little Sunnyside Accommodation
260 Hagley Station Lane Hagley
www.littlesunnyside.com.au



0439 837 048

Quamby Home
364 Beveridges Road Hagley
www.quambyhome.com.au



0412 281 491

Quamby Estate
1145 Westwood Road Hagley
www.quambyestate.com.au

03 6392 2135

Hamilton

A classified historic town in a rural setting, has retained many of its colonial buildings. It was once destined to be the capital of Tasmania despite its distance from a port. The Bushranger Dunn was captured while concealed in a haystack. He shot the husband of a native woman when she refused to leave the body. Dunn then cut the husband's head off and suspended it around the woman's neck and pushed her along under knife point. The rural town of Hamilton will transport you to another time. Perched on the banks of the Clyde River Hamilton looks out towards the Great Western Tiers. In the 19th Century Hamilton was home to a mix of breweries inns and a roaring illegal liquor trade. Today the main street is lined with historic stone buildings from this era including the Old Schoolhouse and St Peter's Church.

Curringa Farm
5831 Lyell Highway Hamilton
www.curringafarm.com.au



0418 863 337

Hamilton Inn Hotel
10 Tarleton Street Hamilton
www.hamiltoninn.com.au



03 6286 3204

Hawley Beach
Hawley House B&B
68 Hawley Esplanade Hawley Beach
www.hawleyhouse.com.au

03 6428 6221

Hellyer Gorge

Henry Hellyer was the first Surveyor to the Government of Van Diemen's Land (1826) he later joined John Batman in the exploration of Port Phillip.



Tasmania the Holiday State of Mind
A great place to visit a wonderful place to live

Hobart

Hobart is the capital of Tasmania; first settlement began in 1803 as a penal colony at Risdon Cove on the shores of the Derwent River. Charles Darwin visited Hobart in 1836. Hobart Town became a city in 1842 and was a major port for the whaling and sealing industries. An amazing theatrical record was established in Hobart by a lady entrepreneur. Mrs Clarke brought a company from London and staged grand opera's for four consecutive years (1835 - 1839). It's easy to fall in love with Hobart, Tasmania's lively capital hugging the broad River Derwent the city offers a vibrant mix of arts and culture local wines and food and natural adventure, Hobart has a rich and often dark past. European settlement in Hobart began in 1803 but the palawa (Tasmanian Aboriginal) people have been here for millennia. Head to the Tasmanian Museum and Art Gallery (TMAG) for insight into this compelling history. For an alternative universe of ideas and expression visit MONA the provocative Museum of Old and New Art built into the bank of the River Derwent. Kunanyi/Mt Wellington is a wilderness playground on the city's doorstep – take in spectacular views from the summit or get moving for a day of hiking or mountain biking.

Hobart

Allurity Hotel **03 6128 3636**
96 Bathurst Street Hobart
www.allurityhotel.com.au

Argyle Motor Lodge **03 6234 2488**
2 Lewis Street Hobart
www.argylemotorlodge.com.au

Backpackers Imperial Hotel **03 6223 5215**
138 Collins Street Hobart
www.backpackersimperialhobart.com.au



Bay Hotel Apartments **03 6221 6999**
123 Sandy Bay Road Sandy Bay
www.bayhotelapartments.com.au

Bay View Villas **1800 061 505**
34 Poets Road West Hobart
www.bayviewvillas.com.au

Beltana Hotel **03 6243 8677**
160 East Derwent Highway Lindisfarne
www.beltanahotel.com.au

Best Western Hobart **03 6232 6255**
156 Bathurst Street Hobart CBD
www.bestwestern.com property code 97434

Visit a local Winery Cellar Door – tassietourist.info



Hobart continued

Black Buffalo Hotel 03 6234 7711
14 Federal Street North Hobart
www.blackbuffalo.com.au

Blue Hills Motel 03 6223 1777
96 Sandy Bay Road Battery Point
www.bluehillsmotel.top

Carlyle Hotel 03 6274 4400
232 Main Road Derwent Park
www.carlylehotel.com.au

Cascade Hotel & Holiday Units 03 6223 6385
22 Cascade Road South Hobart
www.cascadehotel.com.au

Crowne Plaza Hobart an IHG Hotel 03 6213 4200
110 Liverpool Street Hobart
www.ihg.com

Customs House Waterfront Hotel 03 6234 6645
1 Murray Street Hobart
www.customshousehotel.com

Discovery Parks Mornington 03 6244 7070
346 Cambridge Road Mornington
www.discoveryholidayparks.com.au



Discovery Parks Hobart 03 6243 9879
673 East Derwent Highway Risdon Vale
www.discoveryholidayparks.com.au



Globe Hotel 03 6223 5800
178 Davey Street Hobart CBD
www.theglobehotelhobart.com.au

Grand Old Duke 0413 040 403
31 Hampden Road Battery Point
www.grandoldduke.com.au

Grand Vue Private Hotel 03 6223 3388
8 Mona Street Battery Point
www.grandvuehotel.com.au

Try the Local Farmgate Oysters




Hobart continued

Grosvenor Court Apartments 03 6223 3422
42 Grosvenor Street Sandy Bay
www.grosvenorcourtapartments.com.au

Hobart Central YHA  03 6231 2660
9 Argyle Street Hobart
www.yha.com.au

Hobart Cityscape 0434 762 311
43/47 Molle Street Hobart
www.hobartcityscape.com.au

Hobart Hostel and Accommodation  03 6234 6122
41 Barrack Street Hobart
www.hobarthostel.com

Hobart Tower Motel 03 6228 0166
300 Park Street New Town
www.hobarttowernewtown.com

Hotel Grand Chancellor Hobart 03 6235 4535
Ground Floor 1 Davey Street Hobart City
www.grandchancellorhotels.com

Ibis Styles Hobart 03 6289 8500
173 Macquarie Street Hobart
www.accorhotel.com

Islington Hotel  03 6220 2123
321 Davey Street South Hobart
www.islingtonhotel.com

Lenna of Hobart Hotel 03 6232 3900
20 Runnymede Street Battery Point
www.lenna.com.au

MACq 01 Hotel 03 6210 7600
18 Hunter Street Hobart
www.macq01.com.au

Mantra on Collins Hobart 03 6226 1111
58 Collins Street Hobart
www.mantra.com.au

Marquis Hotel Motel 03 6234 3541
209 Brisbane Street West Hobart
www.marquishotel.com.au



Hobart continued

Martin Cash Motel 03 6272 5044
238 Main Road Moonah
www.martincashmotel.com.au

Mayfair Plaza Motel 03 6220 9900
236 Sandy Bay Road Sandy Bay
www.mayfairplaza.com.au

Maylands Lodge 03 6162 4758
40 Swanston Street New Town
www.maylandslodge.com.au

Mona Pavilions 03 6277 9978
655 Main Road Berriedale
www.mona.net.au

Montacute Boutique Bunkhouse 03 6212 0474
1 Stowell Avenue Battery Point
www.montacute.com.au



Mornington Inn Hotel Motel 03 6244 3855
322 Cambridge Road Mornington
www.morningtoninn.com.au

Moss Hotel 1300 772 270
39 Salamanca Place Hobart
www.mosshotel.com.au

Motel 429 03 6225 2511
429 Sandy Bay Road Sandy Bay
www.motel429.com.au

Motel Mayfair on Cavell 03 6231 1188
17 Cavell Street West Hobart
www.mayfaironcavell.com.au

Movenpick Hotel Hobart 03 6235 9888
28 Elizabeth Street Hobart
www.movenpick.com

Narrara Backpackers 03 6234 8801
88 Goulburn Street Hobart
www.narrarabackpackers.com



Hobart continued

Quest Savoy 03 6220 2300
38 Elizabeth Street Hobart City
www.questsavoy.com.au

Quest Trinity House 03 6236 9656
149 Brooker Avenue Glebe
www.questapartments.com.au

Quest Waterfront 03 6224 8630
3 Brooke Street Hobart
www.questapartments.com.au

Prince of Wales Hotel 03 6223 6355
55 Hampden Road Battery Point
www.princeofwaleshotel.net.au

RACV Hobart Hotel 03 6270 8600
154- 156 Collins Street Hobart
www.racv.com.au/resorts/hobart

Riverfront Motel and Villas 03 6272 6721
11 Strathaven Drive Rosetta
www.riverfrontmotel.com.au

Rydges Hotel Hobart 03 6231 1588
393 Argyle Street North Hobart
www.rydges.com.au

Salamanca Inn 03 6223 3300
10 Gladstone Street Battery Point
www.salamancainn.com.au

Salamanca Terraces 03 6232 3900
93 Salamanca Place Hobart
www.salamancaterraces.com.au

Salamanca Wharf Hotel 03 6224 7007
17a Castray Esplanade Battery Point
www.salamancawharfhotel.com

Shipwrights Arms Hotel 03 6223 1846
29 Trumpeter Street Battery Point
www.shipwrightsarms.com.au



Hobart continued

Somerset on the Pier Hobart 03 6220 6600
1 Elizabeth Street Pier Hobart
www.somerset-on-pier-hobart.rez.com

Sullivans Cove Apartments 03 6234 5063
17 Morrison Street Hobart
www.sullivanscoveapartments.com.au

The Alabama Hotel 0499 987 698
72 Liverpool Street Hobart
www.alabahobart.com.au

The Astor Private Hotel 03 6234 6611
157 Macquarie Street Hobart
www.astorprivatehotel.com.au

The Henry Jones Art Hotel 03 6210 7700
25 Hunter Street Hobart
www.thehenryjones.com

The Lodge on Elizabeth 03 6231 3830
249 Elizabeth Street Hobart
www.thelodge.com.au

The Macquarie Hotel 03 6289 6711
172 Macquarie Street Hobart
www.macquariehobart.com.au

The Old Woolstore Apartment Hotel 03 6235 5355
1 Macquarie Street Hobart
www.oldwoolstore.com.au

The Pickled Frog 0478 650 199
281 Liverpool Street Hobart
www.thepickledfrog.com



The Tasman a Luxury Collection Hotel 03 6240 6000
12 Murray Street Hobart
www.marriott.com

Travelodge Hotel Hobart 03 6220 7100
167 Macquarie Street Hobart
www.travelodge.com.au



Take the bus to the top of Mt. Wellington – tassietourist.info

Hobart continued

Travelodge Hotel 03 6248 3555
1 Holyman Avenue Cambridge
www.travelodge.com.au

Vibe Hotel Hobart 03 6240 5600
36 Argyle Street Hobart
www.vibehotels.com

Waterfront Lodge Motel 03 6228 4748
153 Risdon Road Lutana
www.waterfrontlodgemotel.com.au

Waterman's Hotel 0492 418 832
27 Salamanca Place Hobart
www.watermanshotel.com.au

Wrest Point Casino Hotel 03 6221 1888
410 Sandy Bay Road Sandy Bay
www.wrestpoint.com.au

Zero Davey Boutique Apartments 03 6270 1444
15 Hunter Street Hobart
www.zerodavey.com.au

Home Hill

Home Hill National Trust Residence of former Prime Minister of Australia Joseph and Dame Enid Lyons situated at 77 Middle Road.

Howden

Villa Howden 03 6267 1161
77 Howden Road Howden
www.villahowden.com.au

Howrah

The Shoreline Hotel 03 6247 9504
10 Shoreline Drive Howrah
www.shorelinehotel.com.au

Howth

Black Rock Retreat 0419 369 322
77 Reynolds Road Howth
www.blackrockretreat.com.au



Huonville

Situated on the Huon River and is the State's Cherry growing centre, Huon Pine was discovered here and was settled in the 1840's. Huonville is surrounded by fruit orchards farmland and the peaks of the Tasmanian Wilderness World Heritage Area. You're never far from fine produce in Tasmania and Huonville serves up locally sourced fresh and smoked salmon honey apples and stone fruit – with the local orchards making it a go to destination for cider. The town is an ideal base for exploring Tasmania's far south.

Huon Bush Retreat 03 6264 2233
300 Browns Road Ranelagh
www.huonbushretreats.com

Huon Flash Packers Hostel 0417 114 540
2896 Huon Highway Huonville
www.huonflashpackers.com.au 

Huon Valley Caravan Park Tasmania 0438 304 383
177 Wilmot Road Huonville
www.huonvalleycaravanpark.com.au 

Little Devil Backpackers 03 6264 2953
201 Main Street Huonville
www.littledevilbackpackers.com.au 

Ida Bay
Buttongrass Retreat 0427 648 465
308 Lune River Road Ida Bay
www.buttongrassretreat.com.au

Invermay (Launceston)
Peppers Silo Launceston 03 6700 0600
89 Lindsay Street Invermay
www.peppers.com.au silo

Jetsonville
Jetson Farm 0458 581 270
17 View Bank Road Jetsonville
www.tasmanianwildlifetours.com.au 

Karoola
Karoola Cottages 0408 954 499
465 Second River Road Karoola
www.karoola-cottages.com

Visit the Gordon River Dam - Spectacular



Kelso

**Big4 Kelso Sands
Holiday & Native Wildlife Holiday Park
86 Paranaple Road Kelso
www.big4.com.au**



03 6383 9130

Kempton

Registered as a classified historic town. Originally the home of the big river tribe of Aboriginal people. The hotel at Kempton was a popular first night stop for the trip from Hobart to Launceston. A colonial air lingers in Kempton on the land of the Big River people and settled by Europeans in the 1820's. Today its ample collection of historic buildings is like a walk back through time. Highlights include St Mary's Church of England and Dysart House an 1840's coaching inn turned distillery and if you're a fan of whisky you're in luck. Kempton is also home to a second distillery.

Kettering

The area was first explored in 1792 and settled in the early 19th century by timber cutters, whalers and sealers. Oyster Cove is where Truganini the last aboriginal in Tasmania died in 1876. Kettering is the stepping off point for Bruny Island, The seaside town of Kettering is perched on the edge of the D'Entrecasteaux Channel with sweeping views across to Bruny Island. Yacht filled Oyster Cove Marina is the heart of the town The vehicle ferry runs to Bruny Island which takes around 20 minutes. In town grab a coffee sweet handmade treat or meal at one of a handful of establishments.

Oyster Cove Inn

1 Ferry Road Kettering

www.oystercovemarina.com.au

03 6267 4446

Parnella Kettering Accommodation

29 Bloomsbury Lane Kettering

www.parnella.com

0418 125 966

Kingston

Hobart Bush Cabins

330 Procters Road Kingston

www.hobartbushcabins.com.au

0417 590 986

Kingston Hotel Motel

14 Channel Highway Kingston

www.kingstonhotelmotel.com.au

03 6229 6116



Camping Do it Right - Leave a Clean Site

Lake Barrington

Tasmazia & the Village of Lower Crackpot, the Promised Land. Voted in the top 3 family attractions in the world by Conde Nast Traveller. Lake Barrington, Lake Cethana and Lake Rowallan Great trout fishing particularly Lake Barrington which is designated "Big Fish" lake stocked by Inland Fisheries Service. Rowallan has informal camping area by shoreline.

Lake Leake

Lake Leake Inn
320 Lake Leake Road Lake Leake
www.lakeleakeinn.com.au



0437 335 550

Lake Pedder

World renowned fishing.

Lake St. Clair

Lake St. Clair Lodge
520 Lake St. Clair Road Lake St. Clair
www.lakestclairlodge.com.au

03 6289 1137

Latrobe

Historic Township on the banks of the Mersey River, once a busy shipyard town. In 1895 it was lit by the first Hydro- Electric power project. The home of the Launceston Examiner established in 1842. Australia's oldest woollen mill established in 1874 (Waverley Woollen Mills). Platypuses may be elusive, but you've got a good chance of spotting one at Latrobe head to Warrawee Forest Reserve on the Mersy River at dusk or dawn. Just south of Devonport Latrobe was once the main port of the north west. Bells Parade is an ideal picnic spot while the nearby Axeman's Hall of Fame explores the region's forest heritage.

Latrobe Mersey River Caravan Park
10 River Road Latrobe
www.latrobemerseycaravan.com.au



03 6426 1944

Tasmanian Backpackers Working Hostel
Corner Sheean Walk & River Road Latrobe
www.tasmanianbackpacker.com.au



03 6426 1944

Lauderdale

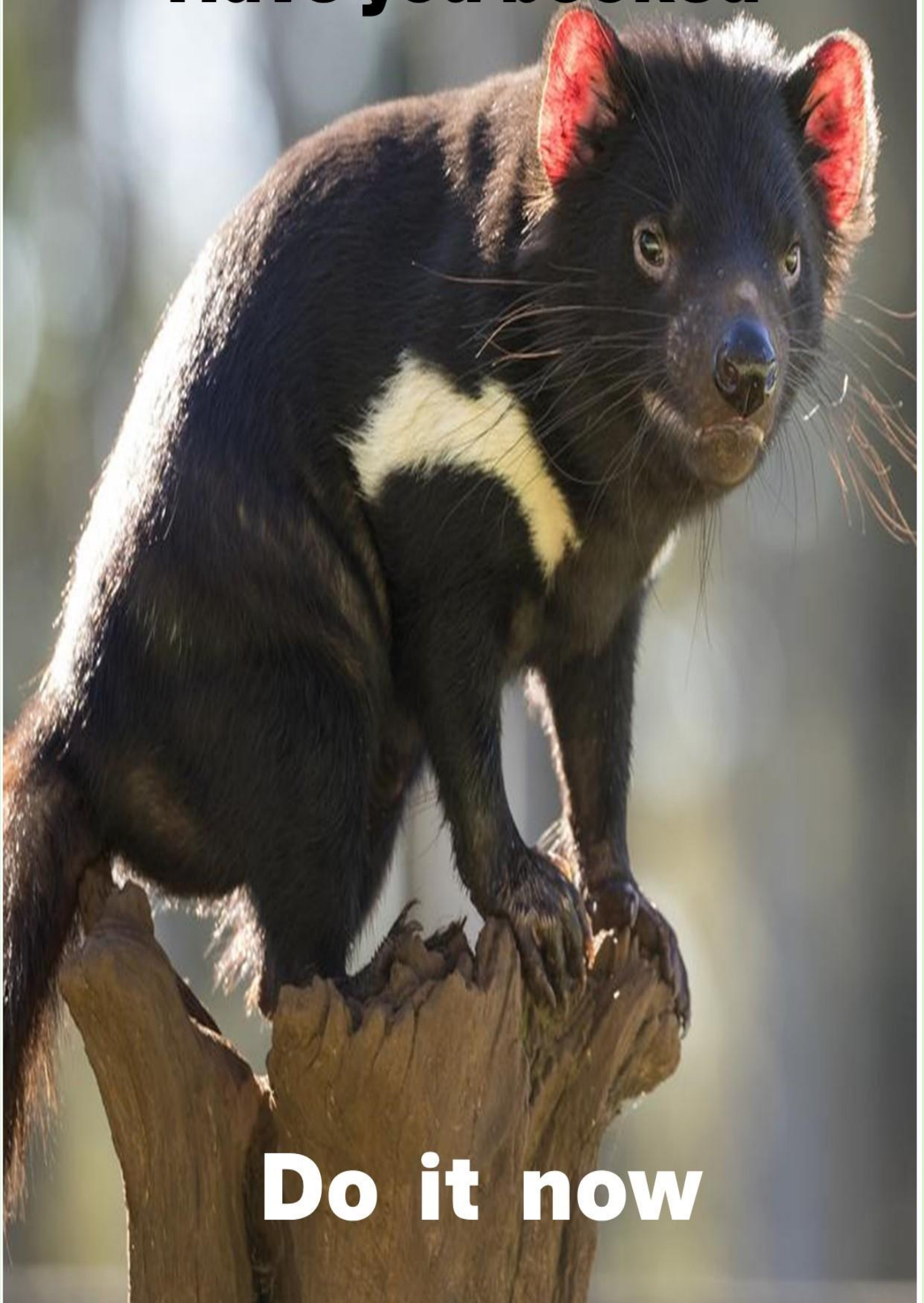
Foreshore Hotel
464 South Arm Road Lauderdale
www.foreshorehotel.com.au

03 6248 6404

Drive carefully Tourists next 1000kms



Have you booked



Do it now

Launceston

Tasmania's second largest city, known as the garden city, because of its parks. The first white settlers arrived in 1798 when George Bass and Matthew Flinders were sent to explore the possibility that there was a strait between Australia and Van Diemen's Land (now Tasmania). Launceston mixes city and country charms with heritage streetscapes and a slice of urban wilderness. Tasmania's second largest city is one of only two in Australia to be named as a UNESCO City of Gastronomy and its Saturday farmer's market is one of the best. This boutique city supports a thriving food and drink scene showcasing wines from the nearby Tamar Valley Wine Region and local craft beers. Launceston's cultural offerings are diverse including Australia's largest regional gallery the Queen Victoria Museum and Art Gallery (QVMAG). On the edge of town Cataract Gorge is the place to unwind and relax. This dramatic gorge is surrounded by forested river reserve and has a range of walks cafes and a swimming pool.

Launceston Visitors Centre **1800 651 827**
68 -72 Cameron Street Launceston
Email: travelcentre@launceston.tas.gov.au
www.launceston.tas.gov.au

Aberdeen Court Motel Apartments **03 6344 5811**
35 Punchbowl Road Punchbowl

Adina Place Motel Apartments **03 6331 6866**
50 York Street Launceston
www.adinaplace.com.au

Areca Launceston **03 6331 3300**
12 York Street Launceston
www.arecalaunceston.com.au

Art Hotel on York **03 6331 7900**
270 – 280 York Street Launceston
www.arthotelonyork.com

Arthouse Backpacker Hostel **1800 041 135**
20 Lindsay Street Invermay Launceston
www.arthousehostel.com.au



Auldington Hotel **03 6331 2050**
110 Frederick Street Launceston
www.auldington.com.au

Balmoral on York **03 6331 8000**
19 York Street Launceston
www.balmoralonyork.com.au



Launceston continued

Best Western Plus Launceston 03 6333 9999
3 Earl Street Launceston
www.bestwestern.com

Big4 Launceston Holiday Park
86 Glen Dhu Street Launceston
www.big4.com.au



03 6344 2600

Coach House Launceston
10 York Street Launceston
www.coachhouelaunceston.com.au

03 6331 5311

Commodore Regent Hotel
13 Brisbane Street Launceston
www.commodoregent.com.au

03 6332 4666

Country Club Villas
10 Casino Rise Prospect Vale
www.countryclubtasmania.com.au

03 6335 5777

Elphin Serviced Apartments
24 Racecourse Crescent Launceston
www.elphinservicedapartments.com.au

03 6334 2233

Hideaway on George
141A George Street Launceston
www.hideawayongedorge.com.au

03 6334 5965

Hotel Grand Chancellor Launceston
29 Cameron Street Launceston
www.grandchancellorhotels.com.au

03 6334 3434

Hotel Tasmania
191 Charles Street Launceston
www.hoteltasmania.com.au

03 6328 3364

Hotel Verge
50 Tamar Street Launceston
www.hotelverge.com.au

03 6310 8100

Launceston Backpackers
103 Canning St. Launceston
www.launcestonbackpackers.com.au



03 6334 2327



Launceston continued

Launceston Central Apartments 03 6334 9493
16 Paterson Street Launceston
www.launcestoncentralapartments.com.au

Leisure Inn Penny Royal Hotel 03 6335 6600
147 Paterson Street Launceston
www.leisureinnpennyroyal.com.au

Mantra Charles Hotel Launceston 03 6337 4100
287 Charles Street Launceston
www.mantra.com.au

Mercure Launceston 03 6331 2055
3 Brisbane Street Launceston
www.mercurelaunceston.com.au

Old Macs Caravan & Motorhome Farm Stay 0408 443 696
55 Sandown Road Norwood
www.oldmacsfarm.com



Olde Tudor Hotel 03 6344 5044
229 Westbury Road Prospect
www.oldetudor.com.au

Parklane Motel 03 6331 4233
9 Brisbane Street Launceston
www.parklanelaunceston.com.au

Peppers Seaport Launceston 03 6345 3333
28 Seaport Boulevard Launceston
www.peppers.com.au/seaport

Peppers Silo Launceston 03 6700 0600
89 Lindsay Street Invermay
www.peppers.com.au

Pod Inn 03 6311 1519
17-19 Wellington Street Launceston
www.podinn.com.au



Quality Hotel Colonial Launceston 03 6331 6588
31 Elizabeth St. Corner George Street Launceston
www.coloniallaunceston.com.au

Riverside Hotel 03 6327 2522
407 West Tamar Road Riverside
www.riversidehotelmotel.com.au



Launceston continued

Sporties Hotel 03 6331 3968
252 Charles Street Launceston
www.sportieshotel.com.au

Star Bar 03 6331 6111
113 Charles Street Launceston
www.starbarcafeandhotel.com.au

Tamar River Villas 03 6327 1022
23 Elouera Street Riverside
www.tamarrivervillas.com

The Grand Hotel Launceston 03 6331 5511
22 Tamar Street Launceston
www.thegrandhotellaunceston.com.au

The Mews Motel 03 6331 2861
89 Margaret Street Launceston
www.themewsmotel.com.au

The Sebel Launceston 03 6333 7555
Corner St. John and William Streets Launceston
www.thesebel.com

TRC Hotel 03 6331 3424
121 – 131 Paterson Street Launceston
www.trchotel.com.au

Village Family Motor Inn 03 6343 1777
84 Westbury Road South Launceston
www.tasvillagemotel.com

Waratah on York 03 6331 3300
12 York Street Launceston
www.waratahonyork.com.au

Legana
Launceston Holiday Park - Legana
711 West Tamar Highway Legana
www.launcestonholidaypark.com.au



Legerwood

Chainsaw carved memorial trees dedicated to World War One soldiers.



Drink, Drugs and Drive – You May Not Survive

Lilydale

Lilydale is tucked beneath the slopes of Mount Arthur north east of Launceston. Visit on the first Saturday of every month to see the village market in full swing showcasing a range of fresh produce arts and crafts. Look out for the colourful and painted murals on poles that stand out from the town's green surrounds. Head north of town to pretty Lilydale Falls set in the rainforest.

Cherry Top Farmstay Boutique Eco Village

81 Lalla Road Lilydale

www.cherrytopfarmstay.weebly.com



03 6395 1167

Lindisfarne (Hobart)

Beltana Hotel

160 East Derwent Highway Lindisfarne

www.beltanahotel.com.au

03 6243 8677

Longford

Settled in 1807 when former settlers of Norfolk Island were given land rights. Settlers used convict free labour to build fine houses and estates, still standing today. Prominent among early settlers Thomas Archer built a number of homesteads having emigrated from England in 1811. Six generations of Archers have lived at Woolmer's Estate from 1817. Former Racecourse Hotel, originally intended to become the Longford railway station, this building has been both a public house and an old peoples home since it was built in 1845. An historic town south west of Launceston, Longford has beautifully preserved historic buildings and an impressive park. Explore the UNESCO World Heritage listed Woolmers and Brickendon estates nearby which were created by farming families in the 1830's as extravagant reminders of their English heritage. Longford's 7.2km Grand Prix track was home scene to a thriving race scene in its 1950s and 1960s heyday and sections of the track can still be driven today.

Brickendon Farm Accommodation

236 Wellington Street Longford

www.brickendon.com.au



0437 525 890

Cressy House Estate

919 Cressy Road Longford

www.cressyhouseestate.com

0400 104 776

Longford Riverside Caravan Park

2a Archer Street Longford

www.longfordriversidecaravanpark.com



03 6391 1470



Longley

Longley International Hotel
Huon Road Longley



03 6239 6378

Low Head

Lighthouse built in 1833 and is Australia's third oldest.

BIG4 Low Head Tourist Park
136 Low Head Road Low Head
www.lowheadtouristpark.com.au



03 6382 1573

East Beach Tourist Park
40 Gunn Parade Low Head
www.eastbeachtouristpark.com



03 6382 1000

Low Head Pilot Station Accommodation
399 Low Head Road Low Head
www.lowheadpilotstation.com.au

03 6382 2826

Lucaston

Pilgrim Hill
200 Crouchs Hill Road Lucaston
www.pilgrimhill.com.au



0478 622 814

Lutana (Hobart)

Waterfront Lodge Motel
153 Risdon Road Lutana
www.waterfrontlodge.com.au

03 6228 4748

Lymington

Beaupre Cottage
34 Gourlays Road Lymington
www.beaupre.com.au



0467 097 236

Margate

In 1792 Bruni D'Entrecasteaux sailed up the channel now bearing his name, charting the coastline and in 1802 the French explorer Nicholas Baudin anchored in the bay to collect fresh water, food and wood.

Maria Island National Park

Maria Island hosted convict settlements between 1825 and 1832 and then again from 1842 to 1851. Three structures from the first convict era still remain.

Penitentiary Accommodation Units
Darlington Maria Island
www.parks.tas.gov.au

03 6257 1420



A close-up photograph of a brown and grey fur seal pup looking directly at the camera. The pup's face is the central focus, with its dark eyes and large, dark nose clearly visible. The fur is thick and textured, with shades of brown, grey, and white. The background is blurred, showing some green grass at the bottom.

**I'm here on
Maria Island**

Where are you?

Mathinna

The town became established as a gold mining centre shortly after gold was discovered in the area in the 1890's. At its peak in the late 1890's the town's population was 5000 including a large number of Chinese miners. The Golden Gate Mine in Mathinna was one of Tasmania's highest-yield gold mines, second only to Beaconsfield. Making it the third largest town in Tasmania. Toilets are located at the recreation ground. Please note roads are unsealed.

Walking Trail

Evercreech Forest Walk = 40 minute return, easy 🐾

Experience this easy rainforest walk, either via the 2.3-km loop trail (which involves a river crossing) or return the same way once you have reached the small waterfall. Gas barbecues, picnic benches and eco toilets are available here. Add on a short 20 minute return walk from the car park to see the "white knight", the tallest White Gum in the world.

Walking Trail

Mathinna Falls = 30 minutes return, easy

Mathinna Falls are located about 15-minutes' drive from the town of Mathinna, heading north towards Evercreech Forest Reserve. The first waterfall, the easiest to access, is a short 15 minute walk that guides you directly to the base of the waterfall. It is possible to climb to the second tier of the waterfall via a steep scramble to the right of the lower falls.

🐾 Dogs on lead welcome

Mawbanna

Walks/Sightseeing

Dip Falls

The Big Tree



Attractions

Blue Hills Honey/Interpretation centre/café

Maydena and the Styx Valley

The 3'6" gauge railway line in Maydena was once used for hauling timber and ore as well as a way point for the dam builders up at Strathgordon. A portion of the disused rail track is now being used by a pedal powered rail track rider's tourist attraction.

Maydena is fringed by wilderness and is an ideal stop on the way to Lake Pedder or Lake Gordon. The gravity focused Maydena Bike Park draws riders with its trails plunging through rainforest above town. Nearby Mount Field National Park provides easy access to Russell Falls and a range of excellent day walks. Head to the incredible Styx Tall Trees Conservation Area to see towering Eucalyptus regnans.

Maydena

Giants Table and Cottages

13 Junee Road Maydena

www.giantstable.com.au

0407 139 497

Melton Mowbray

Once an important market town the Melton Mowbray Hotel has been licensed since 1849.

Miena

Miena is a small lakeside town in the Central Highlands and a popular spot for holidaymakers and fishing enthusiasts with the local area revered as one of the island's premier fly-fishing locations. Miena is one of the coldest places in Tasmania with snow falling frequently creating a picturesque landscape best enjoyed by a warm fire. About 1000m above sea level, nearby yingina/ Great Lake is Australia's second largest freshwater lake.

Central Highland Lodge

03 6259 8179

7795 Highlands Lakes Road Miena

www.centralhighlandslodge.com.au

Great Lake Hotel & Caravan Park

03 6236 4000

3096 Marlborough Highway Miena

www.greatlakehotel.com.au



Moina

Cradle Alpine Retreat

0422 520 056

1429 Cradle Mountain Road Moina

www.cradlealpine.com.au

Mole Creek Karst National Park

A railway was opened to Mole Creek in 1890 carrying mostly timber destined for the paper mill at Burnie and later woodchips for Bell Bay. Tasmanian Leatherwood honey is harvested here. Mole Creek is a small town in the upper Mersey Valley on the road to Cradle Mountain. Learn about the region's thriving underground ecosystem on a guided journey through the exquisite caves system in the Mole Creek Karst National Park. Visit a small batch brewery and enjoy a hearty meal at the local cafes or pub. See Tasmania's devils at the nearby wildlife park or walk the 40 minute Alum Cliffs trail an important site for palawa (Tasmanian Aboriginal) people.

Mole Creek Cabins

03 6363 6124

1876 Mole Creek Road Mole Creek

www.molecreekcabins.com.au

Mole Creek Caravan Park

03 6363 1150

2 Union Bridge Road Mole Creek

www.molecreek.net.au



Mole Creek Hotel

03 6363 1102

90 Pioneer Drive Mole Creek

www.molecreekhotel.com.au



Catch the Bruny Island Ferry at Kettering



Mole Creek continued

Old Wesleydale Heritage Accommodation
1970 Mole Creek Road Mole Creek
www.oldwesleydaleheritage.com



0427 771 056

Wandering Trout – Gourmet Stays
100 Pioneer Drive Mole Creek
www.wanderingtrout.com.au

03 6388 9252

Moonah (Hobart)

Martin Cash Motel
238 Main Road Moonah
www.martincashmotel.com.au

03 6272 5044

Mornington (Hobart)

Discovery Parks - Mornington
346 Cambridge Road Mornington
www.discoveryholidayparks.com.au



03 6244 7070

Mornington Inn
322 Cambridge Road Mornington
www.morningtoninn.com.au

03 6244 3855

Mount Field



Land of the Giants Caravan Park
Lake Dobson Road
Mount Field National Park



03 6288 1149

Mowbray

Mowbray Hotel
254 Invermay Road Mowbray
www.mowbrayhotel.com.au

03 6326 1633

Musselroe Bay

Icena Farm
263 Musselroe Bay Road Musselroe Bay
www.icenafarm.com



0409 933 971



**Don't miss a thing download tourist information
to your phone or tablet - tassietourist.info**

New Norfolk

The first white woman to settle in Australia (Betty King nee Elizabeth Thackery) from the First Fleet is buried here. She is also believed to be the last surviving first fleeter male or female, when she died aged 90 years of age in 1856. The first road connecting Hobart was built in 1818 and the railway in 1887. New Norfolk took its name from free settlers deported from Norfolk Island. On a pretty stretch of the River Derwent New Norfolk is Tasmania's third oldest settlement. Sit in a pew in Tasmania's oldest Anglican church or enjoy a cool draught at one of Australia's oldest pubs just a stone's throw from the hop fields. Spend an afternoon searching for treasures in the crowded aisles of an antique store or tap into the region's fine paddock to plate dining and burgeoning distilling scene.

Derwent Valley Resort 03 6261 5037

34 Lower Road New Norfolk
www.derwentvalleyresort.com

Explorers Lodge 0428 558 705

105 Derwent Terrace New Norfolk
www.explorerslodge.com.au

Junction Motel 03 6261 4029

Corner Lyell Highway and Pioneer Avenue New Norfolk
www.junctionmotel.com.au

New Norfolk Caravan Park 0455 612 812

1 The Esplanade New Norfolk
www.info.newnorfolkcp.com



New Norfolk Hotel 03 6261 2166

79 High Street New Norfolk
www.newnorfolkhotel.com.au

The Bush Inn 03 6261 2256

49 Montagu Street New Norfolk
www.thebushinn.com.au

The Woodbridge Tasmania 0417 996 305

6 Bridge Street New Norfolk
www.woodbridgenn.com.au

New Town

Hobart Tower Motel 03 6228 0166

300 Park Street New Town
www.hobarttowernewtown.com



Fruit and Vegetables CANNOT be taken into Tasmania

Nubeena

Nubeena is a quiet town on the Turrakana Tasman Peninsula south east of Hobart. The town provides easy access to beautiful White Beach for strolls on the sand as well as the nearby Port Arthur Historic Site. It's a short drive to the Cape Raoul walking track which also has a side track down to the renowned big wave surf at Shipstern Bluff a favourite amongst surfers worldwide.

Tasman Ex - Services Club
Corner Main Street and Alfred Street
Nubeena



03 6250 2135

Oatlands

Oatlands was built on brewing and milling. One of Tasmania's oldest settlements and was named by Governor Macquarie after a town in Surrey in 1821. A classified historic town on the shores of Lake Dulverton. The Courthouse is Oatlands oldest building built by 2 convicts in irons taking only 4 months to complete. Holyrood House built in 1840 and once the home of Samuel Page, who ran the Royal Mail Stage Coach Line. It was a designated garrison town by Governor Macquarie in 1821 and surveyed in 1832. Oatlands is home to 150 sandstone Georgian buildings the largest collection of any town in Australia. On the wide main street you'll find restaurants cafes antique shops and boutique accommodation. Learn about the town's history by exploring its heritage sites like St Paul's Church. Callington Mill and the courthouse which dates to 1829 and remains Australia's oldest rural supreme court.

Oatlands

Lake Dulverton
The Esplanade Oatlands



03 6254 5000

Orford

Was first established as a mainland port for the convict settlement Maria Island. However, the marine infrastructure never consisted of more than a few short jetties in shallow waters just inside the mouth of the river which still remain today.

Orford

Eastcoaster Tasmania
1 Louisville Road Orford

03 6257 1172

www.eastcoastertasmania.com.au

Orford Blue Waters Hotel
28 Tasman Highway Orford

03 6257 1102

www.orfordbluewaters.com.au

Ride the Cataract Gorge Chairlift - Launceston



Ouse

Ouse is the settlement where convicts James Goodwin and Thomas Connolly broke out of the South West Wilderness four weeks after their escape from Sarah Island. The Ouse Post Office opened in 1835.

Oyster Cove

Oyster Cove Chalet

03 6267 4209

42 Manuka Road Oyster Cove

www.oystercovechalet.com.au

Penguin

First settled in 1861 as a timber town and became a port town shipping large quantities of timber to Victoria where the 1850's gold rush was taking place. Nearby colonies of little (fairy) penguins. Fashion Designer Alannah Hill lived in Penguin during her early childhood as her parents owned a milk bar in the town. Penguin overlooks Bass Strait on the winding coastal road between Ulverstone and Burnie. Wander shops and cafes along the busy esplanade and marvel at the endearing collection of penguin statues and signage. Watch the little penguins return from the sea each night at the nearby rookery. Penguin plays host to an undercover market each Sunday with stalls selling food wine handcrafts vintage treasure and art.

Penguin Beachfront Apartments

0411 278 473

52 Main Road Penguin

www.penguinbeachfront.com

Penguin Caravan Park

03 6437 2785

6 Johnsons Beach Road Penguin

www.penguincaravanpark.com.au



Rustic Hut Bush Retreat

0438 905 788

851 Ironcliffe Road Penguin

www.therustichut.com.au



The Madsen Boutique Hotel

03 6437 2588

64 Main Road Penguin

www.themadsen.com

Neptune Grand Hotel

03 6437 2406

84 Main Road Penguin

www.goodstone.com.au



Pineberry Retreat Accommodation

0490 346 762

468 West Pine Road West Pine

www.pineberryretreat.com.au



Perth

Perth is named after the old capital of Scotland. Perth just south of Launceston remains endearingly unchanged since the Georgian era of the early 19th century. The town was settled in 1821 and has an interesting history with more than 40 buildings dating back to the early 1800's. Pick up a National Trust brochure from the quaint post office and take a self-guided tour through the town stopping at the impressive Methodist and Baptist churches.

Plenty

The first introductions of brown trout outside their native England. When in 1864, 300 of 15,000 brown trout eggs from the river Itchen survived a four month voyage from Falmouth on the sailing ship Norfolk. By 1866 171 young brown trout were surviving in a Plenty river hatchery. Thirty eight young trout were released into the river.

Poatina

**Poatina Chalet Accommodation
and Conferencing**
65 Gordon Street Poatina
www.poatinachalet.com.au



03 6397 8290

Pontville

Was cited by Governor Macquarie in 1821 and was an early garrison town where convicts built a bridge over the Jordan River. During World 1 and 2 the area had a major army camp. Many of its early buildings are still standing. The Former Post Office (1824) originally the mess for officers stationed in the town this stone building was used as the Post Office from 1860 to 1973. The historic village of Pontville is just a 30 minute scenic drive north of Hobart. The surrounding countryside was once a palawa (Tasmanian Aboriginal) travelling route between Tasmania's north and south and was firestick farmed over thousands of years by the Mumirimina people. Pontville was founded as a garrison town in 1821. Today you'll find Tasmania's oldest whisky distillery here.

Pontville RV Stop
3 Glen Lea Road Pontville
E: enquiries@cmca.net.au



02 4978 8788

Port Arthur



This historic site was one of Australia's most infamous penal settlements from the 1830's to the 1870's. about 12,500 convicts served their sentence here. This site is World Heritage listed. It was abandoned as a prison in 1877, In the 1970's the National Parks and Wildlife service began looking after the site hence the start of Port Arthur as a tourist attraction. Walk through the Penitentiary and glimpse into a convict's cell or make a sobering visit to the Separate Prison and the Asylum which housed those deemed mentally ill. The surrounding rocky shores and wild oceans made escape impossible for convicts but today offers endless opportunities for adventure.



Port Arthur continued

NRMA Port Arthur Holiday Park
Lot 1 Garden Point Road Port Arthur
www.nrmaparksandresorts.com.au



1800 607 057

Port Arthur Motor Inn and Restaurant
29 Safety Cove Road Port Arthur
www.portarthur-inn.com.au

03 6250 2101

Port Arthur Villas
52 Safety Cove Road Port Arthur
www.portarthurvillas.com.au

03 6250 2239

Stewarts Bay Lodge
6955 Arthur Highway Port Arthur
www.stewartsbaylodge.com.au

03 6250 2888

Port Huon

The Kermandie Hotel
4512 Huon Highway Port Huon
www.kermandie.com.au

03 6297 1052

Port Sorell

Situated at the estuary of the Rubicon River named after Governor Sorell and established in 1822 it was a fishing and sealing port. In 1831 Captain B.B. Thomas was murdered here by Aborigines, Thomas had been an active supporter of the Aborigines, but he was found pinned to the ground by fifteen spears. The seaside town of Port Sorell is a summer playground. Walk the foreshore or fish from the floating pontoon and explore beautiful beaches such as Shearwater Hawley or Freer's Beach. At low tide walk to Penguin and Rabbit Islands said to have been a hideout for 19th century bushrangers. Nearby Narawntapu National Park is home to Forester kangaroos wallabies and Tasmanian devils.

Port Sorell

Camp Banksia
1 Anderson Street Port Sorell
www.banksiaportsorell.com



03 6426 4106

Moomba Holiday & Caravan Park
24 Kermode Street Port Sorell
www.moombacaravanpark.com



03 6428 6140

Port Sorell Caravan Park
40 Darling Street Port Sorell
www.portsorellcaravanpark.com.au



03 6428 7267



**Join me
flying south to Tasmania**



**Come by
ship or by plane
we miss you**

Primrose Sands

Primrose Sands RSL Sub - Branch Inc. Club
415 Primrose Sands Road Primrose Sands



03 6265 5655

Prospect

Olde Tudor Hotel
229 Westbury Road Prospect
www.oldetudor.com.au

03 6344 5044

Prospect Vale

Country Club Villas
10 Casino Rise Prospect Vale
www.countryclubtasmania.com.au

03 6335 5777

Pyengana

Pub in the Paddock
250 St. Columba Falls Road Pyengana
www.pubinthepaddocktas.com.au



03 6373 6121

Pyengana Recreation Ground
400 metres west of Pyengana Dairy Company



02 4978 8788

Queenstown



Although Queenstown's halcyon days are long past, it remains in every sense a mining town. The mountainous area was first explored in 1862. Gold discovered at Mt. Lyell in the 1880's led to the growth of Queenstown. Mining was continuous from 1893 to 1994, producing 670,000 tonnes of Copper 510,000kg's of Silver and 20,000kg's of Gold. Queenstown is surrounded by a striking "moonscape" a testament to the town's mining legacy. Misty Mount Owen towers above the town which is home to artists and makers as well as some remarkable buildings including the art-deco Paragon Theatre and the grand Empire Hotel. The West Coast Wilderness Railway is a great wilderness experience travelling 35km through rainforest to Strahan. To experience more of the surrounding wilderness head to Nelson Falls and Horsetail Falls.

Empire Hotel
2 Orr Street Queenstown
www.empirehotel.net.au



03 6471 1699

Gold Rush Inn
65 Batchelor Street Queenstown
www.goldrushinn.com.au

03 6471 1005



Queenstown continued

Mountain View Motel 03 6471 1163
1 Penghana Road Queenstown
www.mountainviewmotel.com

Queenstown Cabin & Tourist Park 0447 750 010
17-19 Grafton Street Queenstown
www.queenstowncabinandtouristpark.com.au



Queenstown Motor Lodge 03 6471 1866
54 - 58 Orr Street Queenstown
www.queenstownmotorlodge.com.au

Railway Hotel 0487 557 170
33 Driffield Street Queenstown



Silver Hills Motel 03 6471 1755
3 Penghana Road Queenstown
www.silverhillsmotel.com.au

The Empire Hotel 03 6471 1699
2 Orr Street Queenstown
www.empirehotel.net.au

West Coaster Motel 03 6471 1033
1 Mary Street Queenstown
www.westcoastermotel.com.au

Railton

Railton is known as the “Town of Topiary” with more than 100 imaginative topiary characters around town. There’s even a walking guide to the topiaries available in local shops or online. Walk in Sykes Sanctuary 16 hectares of bushland with abundant birdlife walking tracks and memorials to Norman Sykes an eccentric conservationist. Mountain bikers can hit the Wild Mersey Mountain Bike Trails here with a loop through the hills above Goliath Park.

CMCA 02 4978 8788
Esplanade Railton



Railton Hotel 0419 750 837
3 Foster Street Railton
www.railtonhotel.com.au



Ranelagh

Highland Getaway Tasmania
545 North Huon Road Ranelagh
www.highlandgetaway.com.au



0400 076 816

Huon Bush Retreats

300 Browns Road Ranelagh
www.huonbushretreats.com

03 6264 2233

Richmond

The most important historic town in Tasmania is the home of Australia's oldest surviving bridge (1823-1825) and many of the town's buildings were constructed in the 1830's. St. John's Catholic Church was built in 1836 and is considered to be the oldest Catholic Church in Australia. Richmond in the heart of the Coal Valley wine region is steeped in history and only 20 minutes from Hobart. Richmond has more than 50 Georgian buildings many meticulously restored and operating as cafes antique stores and accommodation.

Charles Reuben Estate

777 Middle Tea Tree Road Richmond
www.charlesreuben.com.au



0434 955 777

Hatchers Manor

73 Prossers Road Richmond
www.hatchersmanor.com.au

03 6260 2622

Prospect Country House

1384 Richmond Road Richmond
www.prospecthouseprivatehotel.com.au

03 6205 9740

Richmond Arms Hotel

42a Bridge Street Richmond
www.richmondarms.com.au

03 6260 2109

Richmond Caravan & Cabin Park
48 Middle Tea Tree Road Richmond
www.richmondcaravanpark.com.au



03 6260 2192

Taras Richmond Farmstay

31 Ogilvie Lane Richmond
www.tarasfarmstay.com.au



0431 966 065

Risdon

Risdon Cove Historic Site just north of Risdon is the site of Tasmania's first European settlement in September 1803 the intended capital until Lt. Gov. David Collins arrived 5 months later and chose Sullivan's Cove, now Hobart.

Visit a Wildlife Park – tassietourist.info



Risdon Vale - Hobart

Discovery Parks – Risdon Vale
673 Derwent Highway Risdon Vale
www.discoveryholidayparks.com.au

03 6243 9879

Riverside

Riverside Hotel Motel
407 West Tamar Highway Riverside
www.riversidehotelmotel.com.au

03 6327 2522

Tamar River Villas
23 Elouera Street Riverside
www.tamarrivervillas.com

03 6327 1022

Rocky Cape National Park

Two caves here contain many centuries of occupation by Aborigines. The North cave was occupied continuously for over 5,500 years and the South cave for over 4,000 years. Rocky Cape National Park short and long walks taking in scenic hills, tranquil bays and rocky headlands

Sightseeing

Rocky cape National Park houses some of the oldest rocks in Tasmania, flowering plants and aboriginal heritage & caves
Crayfish Creek beaches, fishing and creeks

Attractions

Boating and fishing
Popular for experienced divers

Beth's Cottage
158 Yanns Road Rocky Cape
www.bethscottage.com.au

0408 279 492

Rocky Cape Tavern and Caravan Park
19375 Bass Highway Rocky Cape



0459 039 974

Rocky Hills

Avalon Coastal Retreat
11922 Tasman Highway Rocky Hills
www.avalonretreats.com.au

1300 361 136

Rokeby

Settled in 1809. The first apples to be exported from Tassie were grown here in 1828. The first chaplain of Van Diemen's Land, The Rev. Robert "Bobby" Knopwood is buried in the churchyard

Hastings Caves and Thermal Pool



Rosebery

Rosebery is a mining town; alluvial gold was discovered in 1893 along with zinc-lead sulphide. Like most west coast towns Rosebery was built on mining in this case zinc and gold. Today mining remains the town's core industry. Surrounded by rainforest and dramatic peaks the area draws bushwalkers and mountain bikers. One of Tasmania's tallest waterfalls Montezuma Falls is a three hour return hike reached on foot or by bike along an old mining tram line.

Rosebery Caravan Park
1 Park Road Rosebery

www.westcoastcabins.com.au



03 6473 1366

Rosetta

Riverfront Motel & Villas
11 Strathaven Drive Rosetta

www.riverfrontmotel.com.au

03 6272 6721

Rosevears

Named after an early publican whose Inn was first licensed in 1831.

Rosevears Hotel
215 Rosevears Drive Rosevears

www.rosevearshotel.com.au

03 6394 4074

Ross



Ross is a picturesque Georgian village with a wealth of convict associations and a rich pastoral and military history. The scale of Ross makes it an ideal place to explore on foot and intersection of Church and Bridge Streets is a good place to begin. It has been known for many years as The Four Corners of Ross. Each corner has been named to reflect the character of the building located on that corner (recreation, temptation, damnation and salvation). The village also boasts an ornately carved convict built bridge, a sandstone quarry and the site of the Ross Female Factory which gives fascinating insight into life as a female convict. The Tasmanian Wool Centre houses a Visitor Information Centre and Museum, which highlights the Midland's strong connection to Merino wool. Check out the village's latest additions - the Species Hotel and Arboretum for an interesting eco-experience.

Elm Trees Accommodation
27 Badajos Street Ross

www.elmtreesaccommodation.com.au

03 6381 5340

Riverview at Ross (Ross Motel)
The Esplanade Ross

www.riverviewatross.com.au

03 6381 5224

Ross Caravan Park & Cabins
1 The Esplanade Ross

www.rosscaravanpark.com.au



0437 425 832



Saltwater River

A former penal colony where the worst of the worst convicts were sent to work in the coal mine and the more fortunate ones to work in the second penal settlement to grow vegetables, wheat and also had a piggery . Some of the ruins still exist today.

Sandy Bay (Hobart)

Bay Hotel Apartments 03 6221 6999
123 Sandy Bay Road Sandy Bay
www.bayhotelapartments.com.au

Mayfair Plaza Motel 03 6220 9900
236 Sandy Bay Road Sandy Bay
www.mayfairplaza.com.au

Motel 429 03 6225 2511
429 Sandy Bay Road Sandy Bay
www.motel429.com.au

Wrest Point 03 6221 1888
410 Sandy Bay Road Sandy Bay
www.wrestpoint.com.au

Sassafras

Robin Hood's Well Farm Stay
8108 Bass Highway Sassafras
www.robinhoodswell.com



0433 395 753

Savage River

Iron Ore deposits discovered here in 1877 but left untouched for nearly a century due to the difficulty in extracting iron from low quality ore.

Scamander

A holiday town offers excellent sea and river fishing, with great swimming beaches.

Blue Seas Holiday Villas 03 6372 5211
2 Wattle Drive Scamander
www.blueseasholidays.com.au

Scamander Beach Resort 03 6372 5255
158 Scamander Avenue Scamander
www.scamanderbeachresort.com.au

Scamander Sanctuary Holiday Park
1 Winifred Drive Scamander
www.scamandersanctuary.com.au



0457 725 311



Scamander continued

Scamander Tourist Park
70 - 88 Scamander Avenue Scamander
www.scamandertouristpark.com.au



03 6372 5121

Scottsdale

First surveyed in 1855 and was described as "the best soil on the Island" Scottsdale is the main Agricultural town in Tasmania's North East. An hour north east of Launceston, Scottsdale is surrounded by rolling green pastures. Mountain bike enthusiasts can hit the 26km North East Rail Trail following the abandoned railway line through to Billycock Hill. For sweeping views walk the 5km (return) track to the summit of Mount Stronach. In town refuel at the craft brewery before heading to nearby Nabowla to visit the region's famed lavender farm.

Anabel's of Scottsdale
46 King Street Scottsdale
www.anabelsofscottsdale.com.au


03 6352 3277

Lords Hotel Motel
2 King Street Scottsdale
www.lordshotel.com.au

03 6352 2319

Seven Mile Beach
Club Wyndham
78 Surf Road Seven Mile Beach
www.ramadasevenmilebeach.com.au

03 6248 6222

Shearwater 
Shearwater Resort
17 Shearwater Boulevard Shearwater
www.shearwatertavern.com.au

03 6428 6205

Sheffield

Located in the foothills of Mt Roland, in one of the most scenically attractive areas of the state. Well known far and wide for its spectacular Murals. Sheffield is a friendly town at the foot of majestic Mount Roland where history and art collide. Once an industrial hub the north west town has reinvented itself as an artistic community. Each year the International Mural Fest painting competition is held with artists participating in a week long paint off. Sheffield is also home to Steam Fest a three day celebration of steam and the Taste of the North West Festival showcasing the region's finest food and drinks.

AAA Granary Accommodation
575 Staverton Road Sheffield
www.granary.com.au



0401 512 523



Sheffield continued

Sheffield Hotel

03 6491 1130

38 Main Street Sheffield

www.thesheffieldhoteltasmania.com

Sheffield Motor Inn

03 6491 1800

51 Main Street Sheffield

www.sheffieldmotorinn.com.au

Sidmouth

Auld Kirk a landmark in this small holiday resort on the Tamar River this stone church was built in 1846 by Presbyterian settlers with the aid of convict labour.

Smithton



Renowned for its Blackwood swamp forest and it was the first European settlement in the far North West. Smithton is the most productive dairy and vegetable growing area in the state. Enid Lyons first woman elected to the Australian House of Representatives, born in Smithton. Breathe deep some of the worlds cleanest air blows across Tasmania's north west tip. Smithton is the last town before remote Arthur River and the gateway to the takayna/Tarkine wilderness. Sample some of Tasmania's best dairy products fresh seafood and prime beef available at farm gates and eateries. Tour Tasmania's largest wind farm at Woolnorth or take on the challenging Southern Ocean swells with a surf at Marrawah.

Smithton Walks/Things to do

Duck River foreshore path

Kids play ground

Fishing off the jetty

Cycling

SWIRL-Smithton Wellbeing Indoor Recreation & Leisure Centre/Swimming Pool

Sightseeing

Tier Hill lookout

Photo frame West Esplanade

Attractions

Duck River Robotic Dairy and La Cantara Cheese factory

Circular Head Heritage Centre

Smithton Visitor Information Centre (Yellow I)

Fresh produce Tarkine Fresh Oysters,

La Cantara cheese and milk/sales & tastings

Robins Island Wagyu, Cape Grim Beef.

Tour Cape Grim with Woolnorth Tours

Start of the Tarkine drive

Tall Timbers 4WD guided tours

Landmarks

Duck River



Smithton continued

Tall Timbers Hotel
5/15 Scotchtown Road Smithton
www.talltimbershotel.com.au



03 6452 9000

The Bridge Hotel
2 Montagu Road Smithton
www.goodstone.com.au



03 6452 1389

River Breeze Caravan & Cabin Park
69 Montagu Road Smithton



03 6452 1181

Snug

Named because of its snug and agreeable seclusion of the inlet.

Snug Beach Cabin & Caravan Park
35 Beach Road Snug
www.snugpark.com.au



03 6267 9138

Somerset

Best Western Burnie (Murchison Lodge)
9 Murchison Highway Somerset
www.bestwestern.com property code 90473

03 6435 1106

Seabrook Hotel Motel
15275 Bass Highway Somerset
www.seabrookhotel.goodstone.com.au

03 6435 1209

Somerset Beachside Cabin & Caravan Park
113 Bass Highway Somerset
www.somersetbeachside.com.au



03 6435 2322

Somerset Hotel
25 Wragg Street Somerset
www.somersethotel.goodstone.com.au

03 6435 2346

Sorell

Founded in 1821 it played an important part in early colonial history by providing most of the grain for the state from 1816 - 1860. It also supplied grain for NSW for 20 years. In 1872 the Sorell Causeway was opened.

Sorell Council Self - Contained RV Park
6 Montagu Street Sorell



03 6269 2924



South Arm

South Arm RSL Club
2972 South Arm Road South Arm



03 6239 9171

Southport

Southport Hotel and Caravan Park
8777 Huon Highway Southport
www.southportcaravanpark.com.au



03 6298 3144

St. Helens

St. Helens is the largest town on the north-east coast of Tasmania, on Georges Bay. It was named after St. Helens in the Isle of Wight, England. It is known as the game fishing capital of Tasmania and is also renowned for its oysters. First used as a whaling base in the early 19th century, when tin was discovered in the surrounding areas in the 1870's, St Helens then became the shipping port for the mines. Public toilets are located at the Visitor Information Centre car park, behind the War Memorial and at the wharf/marina.

Walking Trail

Georges Bay

Multi user bike/walking/sculpture trail 1.5 hour return ,easy 

Start: The Northern end of the Golden Fleece Bridge, near the entrance to St Helens Waterfront. Follow the Georges Bay Foreshore with great views of the bay, continue through the Lions Park, along O'Connors Beach and past the scout hut, return the same way. Look out for the amazing sculptures along the way (www.offthetrailsthelens.com). There are several toilets, picnic benches, gas barbecues, jetties and beach areas along the track.

Walking Trail

Town link = 2 hours return, moderate

Start: From the Lions Park on the corner of Tasman Highway (A3) and St Helens Point Road (C851), cross over the highway into Boggy Creek Valley and take the shared use track through the forest up to the mountain bike trailhead. Toilets are located at the Lions Park and at the trailhead. Return the same way.

St. Helens Point / Akaroa

St Helens Point Conservation Area is managed by Tasmania Parks and Wildlife Service. The area is good for fishing, boating, walking, sightseeing and surfing. There is also an off-road recreational vehicle area, where registered vehicles can access the beach. Horse riding, sand-boarding and dog walking are also permitted in this area. Always carry fresh water as none is available on the Point. Public toilets are available near the boat ramp.



Tasmania home to The Jack Jumpers & Tasmania Devils

St. Helens continued

Walking Trail

Burns Bay (Boat Ramp) to Beerbarrel Beach = 1 hour return easy 🐾

Start: Next to Burns Bay boat ramp and follow the track through the She-oaks to Beerbarrel Beach. This walk takes in the eastern rocky coastline of St Helens Point. Either return the same way or follow the gravel road back from the car park entrance. St Helens Point is Tasmania's most easterly point. Burns Bay is a safe beach for children. Beerbarrel Beach is a surf beach. From Beerbarrel Beach car park, wander down to the beach or visit the lookout on the headland for sweeping views of Maurouard Beach below and St Patricks Head in the distance.

Walking Trail

St. Helens Point Navigation Lookout = 10 minutes return, easy 🐾

Take the second road to the right after the Blanche Point road. Travel approx. 300 metres along this gravel road, the St Helens Light car park is on your left. There are great scenic views from the lookout.

Walking Trail

Peron Dunes to Maurou Beach = 1 hour return, moderate 🐾

Dune and Beach walking. Take the turn to the right off St Helens Point Road into Peron Dunes just past Akaroa and start from the car park. Walk across the rolling sand dunes over to the Tasman Sea. This walk can be done in reverse by starting on Maurouard Beach, although seasonal restrictions apply for dog walking.

Walking Trail

St. Helens training wall to Blanche Point = 30 minutes return . easy

The turn off from St Helens Point Road is signed to Blanche Point. Walk from the car park along the Training Wall which has information panels and seating. A great flat walk for people with limited mobility and a popular fishing spot. Swimming is not recommended, as the tides in and out of Georges Bay are extremely strong at this narrow part of the Bay. Extend the walk along the beautiful white sand of Blanche Beach.

🐾 **Dogs on lead welcome**

Anchor Wheel Motel

03 6376 1358

59 Tully Street St. Helens

www.anchorwheelmotel.com.au

Bayside Hotel

03 6376 1466

2 Cecilia Street St. Helens

www.baysideinn.com.au

BIG4 St. Helens Holiday Park

03 6376 1290

2 Penelope Street St. Helens

www.big4.com.au



St. Helens continued

Kellrairie Units 03 6376 1169
72 Tully Street St. Helens
www.kellrairieunits.com.au

Panorama Hotel 03 6376 1999
1 Quail Street St. Helens
www.panoramahotelsthelens.com

Queechy Motel 03 6376 1321
2 Tasman Highway St. Helens
www.queechymotel.com.au

St. Helens Sporting Complex 03 6376 7900
Tully Street St. Helens



Tasman Holiday Parks St. Helens 03 6376 2332
18 St. Helens Point Road St. Helens
www.tasmanholidayparks.com



Tassie Getaway Parks 03 6376 1290
BIG4 St. Helens Holiday Park
2 Penelope Street St. Helens
www.tassiegetawayparks.com.au



St. Helens (Stieglitz) 03 6376 3298
Hillcrest Tourist Park
10 Chimney Heights Road Stieglitz
www.hillcresttouristpark.com.au



St. Marys

At the headwaters of the South Esk River system there are some convict built structures. A probation station was built in the 1840's to house 300 convicts at Grassy Bottom between St. Marys and Elephant Pass. The railway arrived in 1886. The first European contact with the district occurred when Captain Tobias Furneaux sighted and named the 694 metre St Patrick's Head in 1773. It wasn't until the 1840s that a probation station, housing 300 convicts, was built at Grassy Bottom between the town and St. Marys Pass. They were assigned to build the road across the mountains to the east coast. This was done between 1843 and 1846. It was renamed Cullenswood in 1849 and St. Marys in 1869. Toilets are located next to the Library on the main street, at the skate park and the recreation ground.



St Marys continued

Walking Trail

The Gray Mare's Tail = 10 minutes return, easy 🐾

Start at the parking area at the top of St Marys Pass. The short and easy trail winds through the wet sclerophyll forest, before coming to a lookout platform overlooking the top section of the falls. A tall but typically low-flowing waterfall, Gray Mare's Tail is nonetheless a worthwhile stop, best visited after heavy rain.

Walking Trail

St. Patricks Head = 2-3 hours return, moderate 🐾

St Patricks Head is one of the world's most unique geological features. The trailhead starts at the end of St Patricks Head Road, not far from the centre of St Marys. The path's gradient is a steady, steep, scenic ascent to the summit with some loose rocky sections. The 360° panoramic views at the top are absolutely breathtaking.

St. Marys Hotel

0414 521 276

48 Main Street St. Marys

www.stmaryshoteltasmania.com.au

St. Marys Seaview Farm

0417 382 876

686 Germantown Road St. Marys

www.seaviewfarm.net

St. Marys Sportsground

22 Harefield Road St. Marys



03 6376 1744

Stanley



Nestled under the rock called the Nut, Stanley was the site for the headquarters of the Van Diemen Land Company set up in 1825 to establish a quality Merino Wool Industry. Its wharf also handled whaling and sailing ships. It is the birthplace of Australia's only Tasmanian born Prime Minister. Hon. J.A. (Joe) Lyons. Make a point of driving 2 K's north out of Stanley and visit historic "Highfield Historic Homestead" on Greenhills Road. The perfectly preserved colonial buildings of Stanley sit in the shadow of the Nut, a flat-topped 143m high volcanic plug. Climb the steep zig-zagging path or take the chairlift to the summit for spectacular 360 degree views. At dusk watch little penguins clambering up the beach to their burrows at Godfreys Beach then tuck into seafood fresh from the town's fishing fleet. Take a self-guided heritage walk around town and visit stately Highfield Historic Site.

Walks/Things to do

Stanley Heritage walk

The Nut loop walk

Tatlow's loop beach walk

Fishing dockside/beaches

Kids play grounds

Cycle historic Stanley

Stanley the Iconic Nut



Stanley continued

Sightseeing

Penguin viewing platform
Stanley photo frame
HA lane memorial lookout
Trethewies lookout
Historic convict ruins near Highfield House
Beaches

Attractions

Highfield Historic Site
Nut Chairlift
Joe Lyons cottage
Stanley Discovery Museum
Stanley Visitor Information Centre (White I)
Fresh seafood
40 South Charters
Brown Sugar Cruises/Seal Cruises
Gear Up Stanley/Cycling & beach equipment hire
Angels Share Gin/Whiskey tastings/Giftware
Cow 'n' Calf Art Gallery
The Wine Bar Stanley

Landmarks

The Nut state reserve

Stanley Hotel & Apartments 03 6458 1161
19 Church Street Stanley
www.stanleytasmania.com.au

Stanley Lakeside Spa Cabins 03 6443 4228
87 Stanley Highway Stanley
www.stanleylakesidespacabins.com.au

Stanley Recreation Ground  03 6413 5333
Marine Esplanade Stanley

Stanley Seaview Inn 03 6458 1300
58 Dovecote Road Stanley
www.stanleyseaviewinn.com.au

Stanley Village Waterfront Accommodation 1800 782 653
15 Wharf Road Stanley
www.stanleyvillage.com.au

Tassie Getaway Parks  03 6458 1266
BIG4 Stanley Holiday Park
23A Wharf Road Stanley
www.tassiegetawayparks.com.au 

I'm a solitary soul



**But I do like it
when you come
and visit**

Strahan

Strahan is the only port on Tasmania's West Coast. This little port on Macquarie Harbour Island is the departure point for cruises to the Franklin - Gordon Wild River National Park - Sarah Island (the first penal settlement in Tasmania 1822) - Salmon Farming is carried on in Macquarie Harbour. It is also a base for Crayfish, Abalone and Shark Fishing boats. On the remote west coast shores of Macquarie Harbour and the Launchpad for boats planes and helicopters into the south west wilderness book a cruise along the Gordon River and visit the former penal colony of Sarah Island. Head to Ocean Beach to witness the Southern Ocean's mighty force then catch a performance of Australia's longest running play – The Ship That Never Was.

Aloft Boutique Accommodation **03 6471 8095**
15 Reid Street Strahan
www.aloftaccommodation.com

BIG4 Strahan Holiday Retreat **03 6471 7442**
10 Innes Street West Strahan
www.big4.com.au



Castaway Holiday Apartments **03 6471 7400**
12 Harvey Street Strahan
www.castawaystrahan.com.au

Gateway to the Gordon **0455 213 381**
Grinning Street Strahan
www.gatewaytothegordon.com.au

Motel Strahan **03 6471 7555**
3 Andrew Street Strahan
www.motelstrahan.com.au

Risby Cove Boutique Hotel and Restaurant **03 6471 7572**
44 The Esplanade Strahan
www.risbycove.com.au

Strahan Backpackers YHA **03 6471 7442**
43 Harvey Street Strahan
www.strahanbackpackers.com.au



Strahan Beach Tourist Park **03 6471 7468**
1 - 3 Beach Street Strahan
www.strahantouristpark.com.au



Strahan Bungalows **0459 216 588**
Corner Andrew & Harvey Streets Strahan
www.strahanbungalows.com.au



Strahan continued

Strahan Golf Club
1 Meredith Street Strahan
E: strahangolfclub@gmail.com
Camp Area near Club House



03 6471 7242

Strahan Village Hotel Cottages
41 the Esplanade Strahan
www.strahanvillage.com.au

1300 061 836

Strahan Wilderness Lodge
5 Sarson Close Strahan
www.strahanwildernesslodge.com.au

03 6471 7142

The Crays Accommodation
57 Esplanade Strahan
www.thecraysaccommodation.com

03 6471 7422

The Navigators of Strahan
11 Innes Street East Strahan

0419 300 994

Strathblane

River Run Lodge and Tavern
247 Narrows Road Strathblane
www.riverrunlodge.com.au



0492 461 293

Strathgordon

The construction town for damming of Lake Pedder and Lake Gordon part of the Hydro-Electric scheme in Tasmania. Located deep in the Tasmanian wilderness Strathgordon sits on the shores of Lake Pedder and forms a key part of the hydroelectric scheme. It's an old hydro worker's village at the very end of the road from here nature takes over. Strathgordon is a good base for exploring the more accessible parts of Southwest National Park and its numerous walking tracks as well as peering down from the 140m high Gordon Dam wall.

Pedder Wilderness Lodge
Gordon River Road Strathgordon
www.pedderwildernesslodge.com.au

03 6280 1166

Sullivans Cove

The original name of the site of Hobart.



Take a Boat Cruise on Macquarie Harbour

Swansea

Swansea developed and grew during the 1820's and 1830's to the point where it became the administrative centre of Glamorgan. Australia's oldest municipality proclaimed in 1860. Swansea Bark Mill (1880) processed black wattle bark for use in the Leather Industry.

Bark Mill Tavern & Bakery
96 Tasman Highway Swansea
www.barkmilltavern.com.au



03 6257 8094

Belmont Homestead
14106 Tasman Highway Swansea
www.belmonthomestead.com.au



0422 572 053

Hamptons on the Bay
12164 Tasman Highway Swansea
www.hamptonsonthebay.com.au

0417 481 777

Piermont Retreat
12990 Tasman Highway Swansea
www.piermont.com.au

0487 399 225

Pettit Cottage
19 Franklin Street Swansea
www.pettitcottage.com.au

0448 578 282

Swansea Backpackers
98 Tasman Highway Swansea
www.swanseabackpackers.com.au



0466 405 424

Swansea Beach Chalets
27 Shaw Street Swansea
www.swanseachalets.com.au

03 6257 8177

Swansea Cottages & Lodge Suites
43 Franklin Street Swansea
www.swansecottages.com.au

03 6257 8328

Swansea Holiday Park
2 Bridge Street Swansea
www.swansea-holiday.com.au

03 6257 8148

Swansea Motor Inn
1C Franklin Street Swansea
www.swanseamotorinn.com

03 6257 8102

Recommend the FREE Travel Pack on Social Media



Swansea continued

Swansea Ocean Villas
3 Maria Street Swansea

www.swanseaocenvillas.com.au

03 6257 8656

The Waterloo Hotel
1A Franklin Street Swansea

www.thewaterloo.au

03 6257 8577

Table Cape

Named by Bass and Flinders in 1798. Aboriginal occupation here dated back for over 8,000 years.

Taranna

Australia's first railway carried passengers and supplies shipped from Hobart to Taranna for the Penal Settlement at Port Arthur 7km away thus avoiding the rough sea journey around Cape Raoul. Taranna is a tiny settlement on the road to Port Arthur on the Turrakana/Tasman Peninsula. It was once the terminus for Australia's first railway possibly the only railway relying on human horsepower with carriages pushed by teams of convicts. Nearby is a wildlife conservation park where endangered Tasmanian devils are the star attraction and you can wander among wallabies possums and kangaroos.

Rosedale Homestead Camping Farm
19 Nubeena Road Taranna

www.rosedalehomestead.com.au



0418 126 151

Tarraleah

Built in the 1930's by the Hydro Electric Commission to house Tasmania's pioneering hydro- electric officers and management. The highland village of Tarraleah was built in the 1930s to house workers on Tasmania's hydroelectric scheme. The cottages have since been turned into holiday accommodation and there's plenty to do trout fishing kayaking half day hikes or high altitude golf. Remnants of the town's past are ever present the vista is dominated by the huge steel water pipes that feed the hydroelectric scheme.

Tarraleah Highland Caravan Park
Nungina Street Tarraleah

www.tarraleah.com



0415 037 886

The Lodge at Tarraleah
25 Main Square Oldina Drive Tarraleah

www.tarraleahlodge.com

0415 037 886



Tassie Tourist Information
tassietourist.info

The Tarkine

(Including Arthur River & Marrawah)

Walks/Sightseeing

Arthur River coastal walk
Sundown point state reserve
Nelson Bay
Rebecca Lagoon
Julius River
Lake Chisholm
Milkshake Hills
Trowutta Arch State reserve
Arthur Pieman Conservation Area
Surfing/Marrawah

The Tarkine Attractions

Arthur River Cruises
Tall Timbers Adventure Tours
Tarkine Quad and Side by Side Adventures
Tarkine Trails - Tarkine Drive
Start of the Western Explorer
Arthur River Canoe & Boat Hire
Arthur River Parks & Wildlife Information Centre

The Tarkine Landmarks

Trowutta Arch
The Edge of the World

Tomahawk

Tomahawk Caravan Park
Lot 1 Main Road Tomahawk



0456 580 221

Triabunna

When Maria Island was a penal settlement Triabunna was a garrison town and whaling base. Today it has a scallop and abalone industry and is the departing point to Maria Island for tourists wishing to go for the day or stay on the Island overnight, accommodation available.

Spring Bay Hotel
1 Charles Street Rear of Hotel Triabunna
www.springbayhotel.com.au



03 6257 3115

Spring Bay Mill
555 Freestone Point Road Triabunna
www.springbaymill.com

03 6130 3007



Triabunna Seafarers Memorial

Triabunna continued

Triabunna Cabin and Caravan Park
4 Vicary Street Triabunna

www.triabunnaaccommodation.com.au



03 6257 3575

Tandara Motor Inn
17 Tasman Highway Triabunna



03 6257 3333

Triabunna RV Stop
Opposite Spring Bay Hotel



03 6256 4777

Tulla

This peaceful former mining town is surrounded by lakes rivers and mountain ranges. Tullah sits on the shore of Lake Rosebery a much loved place for boating fishing and kayaking. The forested slopes of Mount Farrell and Mount Murchison overlook the town beckoning walkers and mountain bikers. The historic Wee George Wood Steam Railway once transported pioneers into Tullah the tiny locomotive still operates on selected weekends.

Tullah Lakeside Lodge
56 Farrell Street Tullah

www.tullahlakesidelodge.com.au

03 6473 4121

Tunbridge

Established in 1809 when it was called Tunbridge Wells. Tunbridge became the central coaching stop between Hobart and Launceston and was the site of much prized salt plains at a time when salt had to be imported from Europe. The former Tunbridge Wells Inn was licensed in 1834.

Turners Beach

OC Ling Memorial Caravan Park
45 Esplanade Turners Beach

www.cabinparkstasmania.com.au



03 6428 2582

Ulverstone

Situated near the mouth of the Leven River established in 1848. Tourism, dairying, poultry and vegetable farming are the main interests in the area. Ulverstone is a laid back coastal town at the mouth of the Leven River. There's a rich agricultural tradition that continues today with vegetables dairy and seafood production. The town's parks beaches coastal paths picnic spots and even a waterslide make it an ideal family getaway. As night falls watch little penguins return to shore at Lillico Beach a coastal reserve and penguin colony off the Bass Highway.

Apex Beachside Caravan Park
104 Queen Street West Ulverstone

www.apexbhp.com



0448 082 468

Ulverstone continued

Beachway Motel and Restaurant
1-5 Heathcote Street Ulverstone

www.beachwayulverstone.com.au

03 6425 2342

Seasonal South Multipurpose Accommodation
49-51 Eastland Drive Ulverstone

www.seasonalsouthmotel.com.au

0488 268 024

Tassie Getaway Parks
BIG4 Ulverstone Holiday Park
57 Water Street Ulverstone

www.tassiegetawayparks.com.au

03 6425 2624

The Lighthouse Hotel
33 Victoria Street Ulverstone

www.lighthousehotel.goodstone.com.au

03 6425 1197

Ulverstone Golf Club
Lobster Creek Road West Ulverstone

www.ulverstonegolfclub.com.au



03 6425 2322

Willaway Motel Apartments
2 Tucker Street Ulverstone

www.willawaymotel.com.au

03 6425 2018

Van Diemen's Land

Named after Antony van Diemen Governor General of the Netherlands East Indies officially took the name of Tasmania (from Abel Tasman) upon the cessation of transporting convicts 1853.

Waratah

Was the site of the first mining boom in Tasmania and Mount Bischoff was the richest tin mine in the world at that time discovered in 1871. The underground mine closed in 1914 but surface mining continued until tin prices slumped in 1929. Waratah sits on the edge of the takayna/Tarkine wilderness and unusually features a breathtaking waterfall in the heart of the town. Waratah's tin mine changed the financial fortunes of Tasmania while tin mining has long since ended here its legacy lives on in the historic buildings including the Waratah Courthouse Museum with its local artefacts stories and photos. Worthy nearby bushwalks include Hellyer Gorge the dramatic Philosopher Falls and Whyte Hills Outlook.

Bischoff Hotel
20 Main Street Waratah

www.bischoffhotel.com.au

03 6435 0614

Tasmania home of the Tassie Devil



Weldborough

Weldborough Hotel
29722 Tasman Highway Weldborough
www.weldborough.com.au



03 6354 2223

Wayatinah

Wayatinah Lakeside Caravan Park
131 Wayatinah Road Wayatinah
www.wayatinah.com



03 6289 3317

Westbury

First surveyed in 1823 and laid out in 1828 by the Van Diemen's Land Company. A garrison village was developed in the 1830's centred around a village green still in use today for St. Patrick's Day Festival celebrating the towns Celtic links and some fine old buildings. Westbury in Tasmania's central north has all the elements of a charming English village – look for thatched cottages a village green and a town common. The main street boasts well-kept inns bed and breakfasts antique shops galleries and cafes. A stop at Pearn's Steam World for a look at the impressive collection of antique steam engines is a must for history buffs and train lovers.

West Kentish

Eagles Nest Retreat
192 Careys Road West Kentish
www.eaglesnestretreat.com.au



0461 533 500

Westbury

Fitzpatrick's Inn Accommodation
56 Meander Valley Road Westbury
www.fitzpatricksinns.com.au

03 6393 1153

Westbury Gingerbread Cottages
52 William Street Westbury
www.westburycottages.com.au

03 6393 1140

Westerway

Westerway on the bank of the Tyenna River is the gateway to Mount Field National Park's alpine lakes waterfalls and numerous walking tracks. The local berry farm comes to life in summer with bountiful raspberries blackberries and blackcurrants. Stop at the farm gate for a punnet or pick your own. Wander to the river for a chance to spot a platypus.

White Beach

White Beach Tourist Park
128 White Beach Road White Beach
www.whitebeachtouristpark.com.au



03 6250 2142



Wilmot

Named after the first civilian to become Governor of Tasmania in 1843. The last township before Cradle Mountain at the edge of the wilderness Wilmot has a rich pioneering history. The area is touted as the “Valley of Views” stop at Wilmot Lookout for spectacular panoramas of Lake Barrington and Tasmania’s northern mountains. The town is also known for its quirky letterbox trail with novelty letterboxes created by local residents from an array of materials.

Winnaleah

Winnaleah Hotel
12 Main Street Winnaleah
www.winnaleahhotel.com.au



03 6354 2331

Woodbridge

Lily Poulett-Harris founder of women's cricket grew up here in a house converted by her father from a hotel to a homestead at Peppermint Bay in 1885.

Wynyard

The centre of prosperous dairy and mixed farming. Local scenic attractions of Table Cape an extinct volcano and a guided tour of the lighthouse with its views inland along the north coast. Magnificent Table Cape is Wynyard’s most remarkable natural wonder dominating the coastline and providing spectacular views of the north west coast. Each spring the Cape’s tulip frons bursts into colour and visitors can wander photogenic rows of blooms. Stroll the clifftop walking track to Table Cape Lighthouse and explore the history of the region through art and nostalgia at the fascinating Wonders of Wynyard Exhibition and Visitors Information Centre.

Aquila Barn
66 Table Cape Road Wynyard
www.boatharbouraccommodation.com



0417 282 645

Alexandria B&B
1 Table Cape Road Wynyard
www.stayalexandria.com.au

03 6442 4411

Beach Retreat Tourist Park
30B Old Bass Highway Wynyard
www.beachretreattouristpark.com.au



03 6442 1998

The Waterfront Motel Wynyard
1 Goldie Street Wynyard
www.waterfrontwynyard.com

03 6442 2351

Wharf Hotel Wynyard
10 Goldie Street Wynyard
www.wharfhotelwynyard.com.au

03 6442 2344



Zeehan

Named after one of Abel Tasman's ships, this former mining town of silver and lead deposits discovered in 1882 is a National Trust classified historic town. In 1901 Zeehan had 26 hotels and a population of 10,000 making it Tasmania's third largest town. The famed concert pianist Eileen Joyce was born in Zeehan. The Gaiety theatre which seated 1000 people is actually part of the Grand Hotel. It opened in 1898 and in its heyday the best of local and international talent performed there including Enrico Caruso, Dame Nellie Melba and Lola Montez. Silver and Lead deposits discovered here in 1882. The boom between 1893 and 1908 saw \$8 million worth of ore mined. Nicknamed "Silver City" Zeehan grew to be Tasmania's third largest town in the late 1800s after tin silver and lead were discovered sparking the west's largest mining boom. Head to the West Coast Heritage Centre with its excellent displays on the area's palawa (Tasmanian Aboriginal) pioneering and mining past an extensive mineral collection old locomotives and mining equipment. Hike Mount Zeehan for magnificent west coast views or explore the Spray Tunnel a 100m long abandoned railway tunnel on the town's outskirts.

Heemskirk Motor Hotel

25 Main Street Zeehan

www.heemskirkmotorhotel.com.au

03 6471 6107

Zeehan Bush Camping (Glamping) & Cabins

1 Hurst Street Zeehan

www.zeehanbushcamp.com.au

03 6471 6633

Zeehan Golf Course and RV Camping

Zeehan RV Park

Fincham Street Zeehan

E: zeehanthrives@gmail.com

www.westcoasttas.com.au/listingszeehanrvpark



03 6471 6225



Tasmania the holiday state of mind

A great place to visit, a wonderful place to live.

Tassie Tourist Information

Email: tassietourist@gmail.com

www.tassietourist.info



Tourist Information Centres



Avoca	Avoca Museum and Information Centre 16 Blenheim Street Avoca Email: avocamuseumandinfo@gmail.com	0408 302 418
Bicheno	Log Cabin General Store 59 Burgess Street Bicheno	03 6375 1220
Coles Bay	Freycinet National Park Visitor Centre Email: freycinet@parks.tas.gov.au	03 6256 7000
Cradle Mountain	Cradle Mountain National Park Office 4057 Cradle Mountain Road Email: cradle@parks.tas.gov.au	03 6492 1110
Deloraine	Visitor Information Centre 98 Emu Bay Road Deloraine Email: info@greatwesterntiers.net.au	03 6362 5280
Devonport	Visitor Information Centre Market Square 145 Rooke St. Devonport Email: tourism@devonport.tas.gov.au	03 6420 2900
Evandale	Visitor Information Centre 18 High Street Evandale Email: info@evandaletasmania.com	03 6391 8128
Exeter	Visitor Information Centre 81 Main Road Exeter Email: tamar@wtc.tas.gov.au	1800 637 989
Geeveston	Visitor Information Centre 15 Church Street Geeveston Email: visitgeeveston@gmail.com	03 6297 1120
George Town	Visitor Information Centre 92-96 Main Road George Town Email: info@georgetown.tas.gov.au	03 6382 1700
Hobart	Hobart Travel Information & Booking 20 Davey Street Hobart Email: bookings@hobarttravelcentre.com.au	03 6238 4222



Tourist Information Centres



Huonville	Huon Flash Packers 2896 Huon Highway Huonville Email: info@huonflashpackers.com.au	0417 114 540
Latrobe	Visitor Information Centre 21 George Street Latrobe Email: tourism@latrobe.tas.gov.au	03 6426 2240
Launceston	Visitor Information Centre 68 Cameron Street Launceston Email: travelcentre@launceston.tas.gov.au	1800 651 827
Mount Field	National Park Office Email: mtfield@parks.tas.gov.au	03 6363 1239
Penguin	Visitor Information Centre 78 Main Road Penguin Email: info@coasttocanyon.com.au	03 6437 1421
Port Arthur	Port Arthur Historic Site Arthur Highway Port Arthur Email: reservations@portarthur.org.au	1800 659 101
Queenstown	Galley Museum Eric Thomas 1 Driffield St. Queenstown Email: galley@bigpond.net.au	03 6471 1483
Ross	Tasmanian Wool Centre 48 Church Street Ross Email: taswoolcentre@bigpond.com	03 6381 5466
Scottsdale	Scottsdale Visitor Information Centre 4 Alfred Street Scottsdale Email: manager@svic.com.au	03 6352 6520
Shearwater	Shearwater Resort 17-23 Shearwater Boulevard Shearwater Email: reservations@classicholidays.com.au	03 6428 6205



Tourist Information Centres



Sheffield	Sheffield Visitor Information Centre 5 Pioneer Crescent Sheffield Email: kvic@kentish.tas.gov.au	03 6491 1179
Smithton	Smithton Visitor Information Centre Duck River Pavilions 12 Nelson Street Smithton Email: info@stanleyandtarkine.com.au	03 6413 5333
St. Helens	Visitor Information Centre 61 Cecilia Street St. Helens Email: sthelensvic@bodc.tas.gov.au	03 6376 1744
Stanley	Stanley Visitor Information Centre 10 Church Street Stanley Email: info@stanelyandtarkine.com.au	03 6413 5333
Strahan	West Coast Visitor Info. & Booking Centre The Esplanade Strahan Email: tourism@westcoast.tas.gov.au	03 6472 6800
Swansea	Bark Mill Tavern 96 Tasman Highway Swansea	03 6257 8094
Taranna	Tasmanian Devil Unzoo 5990 Arthur Highway Taranna	03 6250 3230
Ulverstone	Visitor Information Centre The Hive 50 Main Street Ulverstone Email: info@coasttocanyon.com.au	03 6425 2839
Wynyard	Visitor Information Centre 8 Exhibition Link Wynyard Email: wow@warwyn.tas.gov.au	03 6443 8330



Dusk and Dawn Wildlife on the Move - Be Alert

Download

Tourist Information

What to See and Do

Tourist Attractions

Must See and Do's

Attractions - Places of Interest - Sightseeing

Boat Cruises

Breweries, Distilleries and Tours

Car & Campervan Rental

Handy Stuff to Know

Museums / Art Galleries

National Parks – Historic and World Heritage Sites

Scenic Flights - Tourist Railways – Wildlife Parks

Things to See and Do

Visitor Information Centre Contacts

Walks and Tours

Wildlife Parks

Wineries, Cellar Door Sales & Tastings

And much more - **Don't miss a thing**



Includes websites - www.tassietourist.info

Day Tours from Devonport



Mole Creek - Mole Creek Limestone Caves (59km)

Cradle Mountain - Spectacular Scenery and Walks (86km)

Hadspen - Entally Historic Homestead (90km)

Launceston - Tamar Valley - Cataract Gorge (100km)

Longford - Brickendon - Woolmers Heritage Sites (95km)

Railton - Topiary Town (23km)

Stanley - The Iconic Nut and Chairlift (125km)

Day Tours from Hobart

Hastings Caves via Huon Road and Huon Highway (110km)

Port Arthur Historic Site via the Arthur Highway (91km)

Mount Field Nat. Park & Russell Falls - Gordon River Rd. (74km)

Richmond Historic Town (27km)

Tahune Airwalk - Geeveston (84km)

Day Tours from Launceston

Tamar Valley - Wine Region (40km)

Cataract Gorge and spectacular views from the chair lift (3km)

Clarendon House (1838) Nile (30km)

Entally House (1819) Hadspen (13km)

Evandale Village - soak up the local history & Market (19km)

Franklin House (1838) at Youngtown (8km)

Longford - Woolmers Estate (1843) Longford (33km)

Brickendon Homestead (1824) at Longford (22km)

Supporting the locals – Creates local Jobs



National Parks

Explore our Parks



www.parks.tas.gov.au

Head Office	1300 135 513
Arthur- Pieman Conservation Area	03 6457 1225
Bay of Fires Conservation Area	0419 372 342
Ben Lomond National Park	1300 827 727
Cradle Mountain National Park	03 6492 1110
Douglas- Apsley National Park	03 6256 7000
Franklin – Gordon Wild Rivers National Park	03 6472 6020
Freycinet National Park	03 6256 7000
Fortescue Bay Campground	03 6250 2433
Great Western Tiers Field Office	03 6701 2104
Hartz Mountains National Park	03 6264 8460
Hastings Caves	03 6298 3209
Highfield Historic Site	03 6458 1100
Lake St. Clair Visitor Centre	03 6289 1115
Hastings Caves & Thermal Springs	03 6298 3209
Maria Island National Park	03 6123 4040
Huonville Field Centre	03 6121 7026
Mole Creek Caves	03 6363 5182
Mount Field Visitor Centre	03 6288 1149
Mount William National Park	03 6387 5510
Narawntapu National Park	03 6428 6277
Rocky Cape National Park	03 6458 1480
South Bruny National Park	03 6293 1419
Strzelecki National Park	03 6359 2217
Tamar Island Wetlands Centre	03 6327 3964
Tasman National Park	03 6250 3980
The Nut State Reserve	1300 827 727
Walls of Jerusalem National Park	1300 135 513

Explore our Parks

National Park Pass



required to enter all National Parks

Available from

Tasmanian Parks and Wildlife Service

Email: parkfees@parks.tas.gov.au

Online www.parks.tas.gov.au

On board Spirit of Tasmania

Service Tasmania Centres or call 1300 135 513

Email: ask@service.tas.gov.au

National Parks Visitor Information Centres

Most Tasmanian Tourist Information Centres



National Parks - A Natural Wonder

Ferries

Bruny Island

Ferry departs Kettering

1300 127 869

www.sealinkbrunyisland.com.au

Corinna

Barge Ferry Pieman River

03 6446 1170

Remember to measure your vehicles length to avoid disappointment on your arrival at the crossing

www.corinna.com.au

Devonport

Spirit of Tasmania Devonport East

1800 634 906

www.spiritoftasmania.com.au

Geelong

Spirit of Tasmania Departure Point

1800 634 906

136 Corio Quay Road North Geelong Victoria

Strict quarantine regulations apply to Tasmania

Fruit and Vegetables CANNOT be taken into Tasmania

Hobart

Mona Fast Ferry

03 6277 9978

Brooke Street Ferry Terminal

www.mona.net.au

Maria Island

Encounter Maria Island

03 6224 8333

Departs from Triabunna Marina

www.encountermaria.com.au



Support the local Tourist Operators

Campervan & Motorhome Rental



- Apollo** 14 Long Street Cambridge
www.apollocamper.com 1800 777 779
- AutoRent** 1045 Cambridge Road Cambridge
21 Richard Street Western Junction
Email: reservations@autorent.com.au
www.autorent.com.au 1300 067 222
- Cruisin Motorhomes** 1300 664 485
3 Runway Place Cambridge 03 6248 4789
Email: reservation@cruisinmotorhomes.com.au
www.cruisintasmania.com.au
- LeisureRent** 0429 727 277
2 Hudson Fysh Drive Western Junction
Email: res@leisurerent.com.au
www.leisurerent.com.au
- Tasmanian Campervan Hire** 0438 807 118
2/105 Mornington Road Mornington
Email: tascamper@gmail.com
www.tascamper.com
- Tasmania Campervan Rentals** 03 6248 4418
5/273 Kennedy Drive Cambridge
Email: info@tassiemotorshacks.com.au
www.tasmaniacampervanrentals.com.au
- Wicked Campers** 0481 606 805
201 Kennedy Drive Cambridge
Email: online@wickedcampers.com
www.wickedcampers.com.au

Caravan Rental



- Tasmanian Caravan Hire** 0409 259 649
90 Pardoe Road Wesley Vale
Email: chris@tasmaniancaravanhire.com.au
www.tasmaniancaravanhire.com.au

Things to see and do – www.tassietourist.info



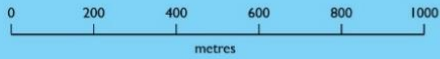
Car Rental



AAA Car Rental Hobart www.aacarrentals.com.au	03 6231 3313
A Total Car Rentals Launceston www.atotalcarrentals.vpweb.com.au	0439 114 418
ABC Car Hire Launceston www.abccarhire.com.au	0417 964 042
Bargain Car Rentals www.bargaincarrentals.com.au	1300 729 230
Drive Car Hire www.drivecarhire.com.au	03 6231 1641
East Coast Car Rentals Hobart and Launceston Airports www.eastcoastcarrentals.com.au	1800 028 881
Enterprise Rent-A-Car Hobart Airport Hobart City Launceston Airport www.enterpriserentacar.com.au	03 6248 4043 03 6159 6156 03 6733 1100
Hertz Car Rental Hobart Airport Hobart City Launceston City	03 6235 9670 03 6235 9690 03 6398 3050
Lo Cost Auto Rent Hobart City and Airport - Launceston Airport www.locostautorent.com	03 6231 0550
Sixt Car Rental Hobart City Hobart Airport Launceston Airport www.sixt.com.au	03 6234 1341 03 6248 5695 03 6391 8105
Tassie Car Rentals Devonport www.tassiecarrentals.com.au	0428 464 094
Thrifty Car Rental Hobart City and Hobart Airport www.thrifty.com.au	13 61 39

Vehicles drive on the left in Australia

DEVONPORT CITY CENTRE



TASSIE TOURIST



SPREYTON 2 km

**Download Tourist Information
To Your Phone or Tablet - tassietourist.info**

TRAVEL TIMES & DISTANCES from DEVONPORT

(Departure Point for Spirit of Tasmania Ferry to Geelong Victoria)

Towns:	Km	Time Approx.
Airport - Launceston (Western Junction)	107	Hour 10 Mins.
Airport - Hobart (Cambridge)	266	3 Hours 15 Mins.
Arthur River - Wild West Coast	194	2 Hours 30 Mins.
Bridport - Fishing Port	139	1 Hour 50 Mins.
Cradle Mountain National Park - Spectacular Scenery	87	1 Hour 30 Mins.
Evandale - Historic Town and Sunday Market	109	1 Hour 15 Mins.
George Town - Old Port Town	105	1 Hour 15 Mins.
Hobart - Salamanca Market - Mount Wellington	257	3 Hours 29 Mins.
Kettering - Ferry Departure Point for Bruny Island	289	3 Hours 50 Mins.
Lake St. Clair National Park - Well Worth a Visit	182	2 Hours 30 Mins.
Longford - Brickendon & Woolmers - World Heritage Site	96	1 Hour 10 Mins.
Launceston City Centre - Cataract Gorge - Tamar Valley	101	1 Hour 5 Mins.
Miena - Great Lake - Central Highlands	122	1 Hour 40 Mins.
Mole Creek - Limestone Caves Mayberry	68	55 Minutes
Port Arthur - Historic Convict Site, World Heritage Listed	334	4 Hours 10 Mins.
Queenstown - Historic Old Mining Town	197	2 Hours 30 Mins.
Ross - Historic Bridge - Sandstone Buildings	160	2 Hours
Scamander - Holiday Town - Sandy Beaches	227	2 Hours 40 Mins.
Scottsdale - Farming - Food Bowl of Tasmania	158	2 Hours
Sheffield - Art, History and Outdoor Gallery - Murals	26	30 Minutes
St. Helens - Bay of Fires - Great Beaches	245	3 Hours
Stanley - The Iconic Nut /Chairlift - Highfield Historic Site	125	1 Hour 40 Mins.
Strahan - Macquarie Harbour - Historic Sarah Island	224	2 Hours 50 Mins.
Hells Gates - Salmon Farming - Gordon River		



Departure Point for Spirit of Tasmania Geelong Victoria

136 Corio Quay Road North Geelong 1800 634 906



HOBART CITY CENTRE

0 100 200 300 400 metres



Macquarie Point



Railyards

A6

A6

A6

A6

A6

A6

A6

A6

A6

A6

A6

A6

A6

A6

A6

A6

A6

A6

B68

A6



TASSIE TOURIST

Download Tourist Information To Your Phone or Tablet - tassietourist.info

TRAVEL TIMES & DISTANCES from HOBART

Towns:	Km	Time Approx.
Airport - Hobart Cambridge via Tasman Highway /A3	19	20 Minutes
Bay of Fires - Great Beaches - Binalong Bay	280	4 hours
Berriedale - MONA something different	13	20 Minutes
Cockle Creek - The Far South	121	2 Hours
Coles Bay - Freycinet National Park	194	2 Hours 40 Mins.
Cradle Mountain National Park - Dove Lake	328	4 Hours 10 Mins.
Devonport East - Spirit of Tasmania Ferry	281	3 Hours 10 Mins.
Evandale - Historic Town - Sunday Market	183	2 Hours 10 Mins.
Hastings - Caves and Thermal Springs	106	1 Hour 40 Mins.
Huonville - Picturesque Huon Valley	38	35 Minutes
Kettering - Bruny Island Ferry	32	30 Minutes
Lake St. Clair - The Great Outdoors - Natural Beauty	180	2 Hours 30 Mins.
Launceston - Midland Highway (Direct Route)	201	2 Hours 20 Mins.
Launceston - East Coast Scenic Route	399	5 Hours 30 Mins.
Longford - Brickendon Homestead - Woolmers Estate	189	2 Hours 30 Mins.
Miena - Central Highlands - Great Lake (Trout Fishing)	136	1 Hour 45 Mins.
Port Arthur - Historic Convict Site	95	1 Hour 20 Mins.
Queenstown - Mining History	261	3 Hours 40 Mins.
Richmond - Historic Bridge - Old Hobart Town Model	27	30 Minutes
Ross - Historic Bridge - Sandstone Buildings	121	1 Hour 30 Mins.
St. Helens - Holiday Town via East Coast Road	253	3 Hours 10 Mins.
Strahan - Macquarie Harbour - Sarah Island	301	4 Hours 15 Mins.
Strathgordon - Gordon Dam - Engineering Marvel	170	2 Hours 30 Mins.
Triabunna - Departure Point for Maria Island Ferry	90	1 Hour 15 Mins.



**Tassie Tourist Information includes websites
giving you the latest information.**

Making planning your holiday simple and easy

www.tassietourist.info



**TASSIE
TOURIST**

LAUNCESTON CITY CENTRE

Queen Victoria
Museum &
Art Gallery
at Inveresk



0 100 200 300 400 metres



Download Tourist Information

To Your Phone or Tablet - tassietourist.info

TRAVEL TIMES & DISTANCES from LAUNCESTON

Towns:	Km	Time Approx.
Airport - Launceston - Western Junction	15	25 Minutes
Arthur River - The Wild West Coast	292	3 Hours 40 Mins.
Beauty Point - On the Tamar River	49	50 Minutes
Bicheno via Lake Leake (Direct Route)	160	2 Hours
Bicheno - Holiday Town via Scottsdale	216	3 Hours 10 Mins.
Binalong Bay - Great Beaches - Bay of Fires	139	2 Hours 30 Mins.
Bridport - The North Coast - Fishing Port	77	1 Hour
Campbell Town - Historic Town in the Midlands	68	50 Minutes
Coles Bay National Park via East Coast	254	3 Hours 40 Mins.
Coles Bay - Freycinet Nat. Park via Campbell Town	176	2 Hours 15 Mins.
Cradle Mountain National Park - Dove Lake	149	2 Hours 10 Mins.
Deloraine - Picturesque Farming Country	51	35 Minutes
Devonport East - Spirit of Tasmania Ferry	100	1 Hour 10 Mins.
George Town - Historic Port Town	50	40 Minutes
Hobart - Midland Highway (Direct Route)	201	2 Hours 20 Mins.
Kettering - Ferry to Bruny Island	233	3 Hours 10 Mins.
Longford - Brickendon & Woolmers - World Heritage Site	22	20 Minutes
Miena - Great Lake - Trout Fishing	107	1 Hour 20 Mins.
Mole Creek - Limestone Caves Mayberry	83	1 Hour 10 Mins.
Oatlands - Many Fine Old Buildings	117	1 Hour 30 Mins.
Port Arthur - Historic Convict Site	250	3 Hours 15 Mins.
Richmond - Historic Town and Bridge	173	2 Hours 10 Mins.
Ross - Convict Built Bridge - Sandstone Buildings	80	1 Hour 5 Mins.
St. Helens (Bay of Fires) via Scottsdale	160	2 Hours 30 Mins.
Stanley - The Iconic Nut and Chairlift	224	2 Hours 50 Mins.
Strahan via Cradle Mountain Murchison Highway	270	3 Hours 30 Mins.
Macquarie Harbour - Sarah Island - Salmon Farming		
Triabunna - Maria Island Ferry Departure Point	186	2 Hours 20 Mins.



Better to arrive at your destination late, rather than not arrive at all - Speed kills

Useful Websites

Beer Trail

www.tasbeertrail.com

Bus Services

www.metrotas.com.au

Camping

www.campsaustraliawide.com

East Coast Tourism

www.eastcoasttasmania.com

Heritage Tasmania

www.heritage.tas.gov.au

Hobart Tourism

www.hobarttravelcentre.com.au

Inland Fisheries

www.ifs.tas.gov.au

Launceston Tourism

www.destinationlaunceston.com.au

National Parks

www.parks.tas.gov.au

National Trust

www.nationaltrust.org.au

Northern Tasmania

www.northerntasmania.com.au

Quarantine



www.nre.tas.gov.au

RACT

www.ract.com.au

Seafood Trails

www.seafoodtrails.com.au

Service Tasmania

www.service.tas.gov.au

Southern Tasmania

www.southerntasmania.com.au

Spirit of Tasmania

www.spiritoftasmania.com.au

Tamar Valley Wine Route

www.tamarvalleywine.com.au

Tourist Information

www.tassietourist.info

Tourism Tasmania

www.discovertasmania.com.au

Travel Deals & Packages

www.tasmania.com

Visitor Info. Centres

www.startwithi.com.au

Weather

www.bom.gov.au

West Coast of Tas

www.westcoasttas.com.au

Whisky and Spirits Trail

www.taswhiskyandspiritstrail.com.au

Wine Trail

www.winetasmania.com.au

Tassie Must See and Things to Do – tassietourist.info

Caravan Service / Repairs & Accessories

Devonport

Complete Caravan & Canvas Repairs
234 William Street Devonport

03 6424 1168

Huntingfield

Alpha's Caravan & RV Centre
10 Ascot Drive Huntingfield

03 6229 1513

Invermay - Launceston

AHA Motorhomes
26 Oswald Street Invermay

0421 208 555

Legana

R & R Caravans
7a Legana Park Drive Legana

03 6330 3807

Moonah

Kings Service Centre
73 Charles Street Moonah

03 6232 2366

Penguin

Coastal RV



0436 465 747

Prospect Vale

Sherriff Caravans Repairs and Accessories
5 Donalds Avenue Prospect Vale

03 6338 1360

Ulverstone

C P Motorhomes
4a Dysons Lane Ulverstone

0417 137 564

Lifestyle Caravans
104 Eastland Drive Ulverstone

03 6425 7639

Westbury

TAS Mobile Caravan Service
83 Meander Valley Road

0458 615 003

Youngtown

Get Hitched Tasmania
30 Charbooday Drive Youngtown

0439 931 284



“Do it Right Leave a Clean Camp Site”

Tasmanians

thank you

for visiting

our great state

Stay Safe and Well

Publishers Note: Every effort has been made to ensure that all the information is accurate. No responsibility will be taken for any mistakes, errors or omissions.

**from the team at
Tassie Tourist Information
Email: tassietourist@gmail.com
www.tassietourist.info**